



Implementing improved asthma self-management as routine

Optimising opportunities for capacity building within programme grants: the example of IMP2ART

¹Hilary Pinnock, ¹Vicky Hammersley, ²Brigitte Delaney, ¹Emma Kinley, ³Barbara Korell, ⁴Kirstie McClatchey, ¹Nazim Uzzaman, ⁵Jessica Sheringham, ³Liz Steed, ³Steph Taylor, for the IMP2ART group

¹University of Edinburgh; ²University of Sheffield; ³Queen Mary University of London; ⁴University of Dundee; ⁵University College London

A total of 22 students, trainees and registrars have contributed to the IMP2ART research.

Luke (ACF) interviewed people with asthma to understand how they learnt to live with their asthma and manage symptoms and treatments.

• Daines L, et al for the IMP2ART group. Understanding how patients establish strategies for living with asthma: IMP2ART qualitative study. *Br J Gen Pract* 2020;70:e303-11



Kalina (BMedSci student) undertook patient interviews eliciting feedback on the patient-facing resources

• Barat A, Czyzykowska K, et al. Developing theoretically underpinned primary care resources for patients with asthma: an exemplar from the IMP2ART trial. Being revised for *Prim Care Res Development*

Drew (MB ChB student) explored the education module data from the IMP2ART trial (April-Dec 2022) to develop an approach to analysis

Flora (MB ChB student) interviewed GPs and primary care nurses about how asthma care has changed since the COVID-19 pandemic

• Flinn F, Appleton H, et al. Primary care clinicians' experiences of remote consulting during the COVID-19 pandemic. Submitted to *Primary Health Care Research & Development*



Omer (MB ChB student) observed the practicalities of screen-sharing to complete action plans

• Hamour O, et al. Completing asthma action plans by screen-sharing in video consultations: practical insights from a feasibility assessment. *npj Prim Care Respir Med* 2020;30:48

Tasmin (Graduate trainee) assisted with recruitment for the trial

Anir and Agalya (ACFs in Public Health), investigated the national context: discussing national policy and guidelines with opinion leaders, and undertaking a rapid literature review of primary care organisation

Eleanor and Jessenka (BMedSci students) second-coded video recordings for Emma's PhD

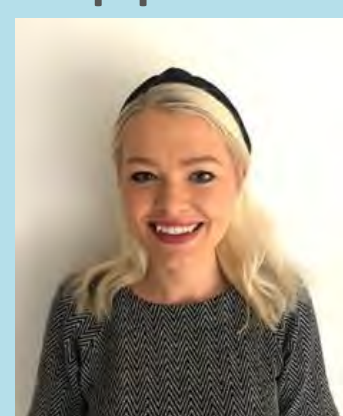
Ayla (GP registrar) updated changes in the context

Emma Kinley (PhD student: completed 2023) investigated delivery of supported self-management in asthma reviews.

- A realist review of supporting self-management in remote asthma reviews
- Analysis of video-recorded review consultations using both remote and face-to-face modes.

The findings of this PhD will inform implementation fidelity, and generate insights into if/how nurses incorporate supported self-management in reviews

• Kinley E, et al. Delivery of supported self-management in remote asthma reviews: a systematic rapid realist review. *Health Expectations* 2022;25:1200-1214



Barbara Korell (PhD student) is using video-ethnography to investigate the role of the facilitator in implementing the IMP2ART strategy.



Nazim Uzzaman (PhD student) is investigating the role of asynchronous consulting in reviewing people with asthma.

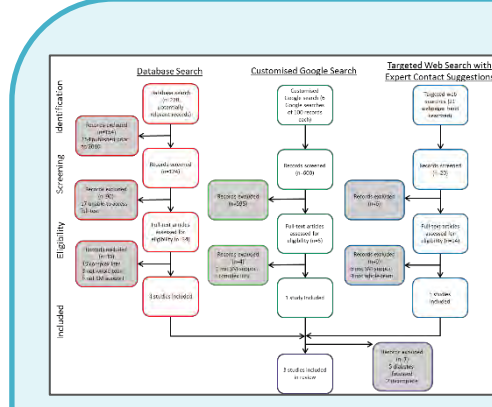
- A mixed methods systematic review of the use of asynchronous consulting for asthma care.
- Ethnographic analysis of how asynchronous consulting for asthma is used in four case study GP practices use.

The findings will inform recommendations on optimal use of asynchronous consulting in asthma care.

• Uzzaman MN, et al. Effectiveness and acceptability of asynchronous digital health in asthma care: a mixed-methods systematic review. Submitted to *npj Digital Medicine*



Audrey (MPH student) analysed grey literature for a systematic review of professional education

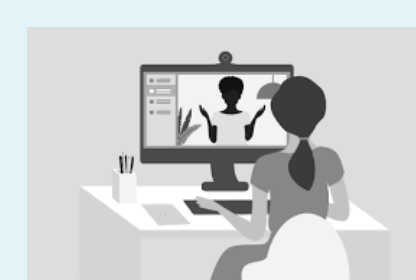


• McCleary N, ..., Buelo A, et al. IMP2ART systematic review of education for healthcare professionals implementing supported self-management for asthma. *npj Prim Care Respir Med* 2018;28:42

Stefanie (visiting PhD student from Munich) undertook a preliminary analysis of the Google analytics data on the usage of the Living with Asthma website

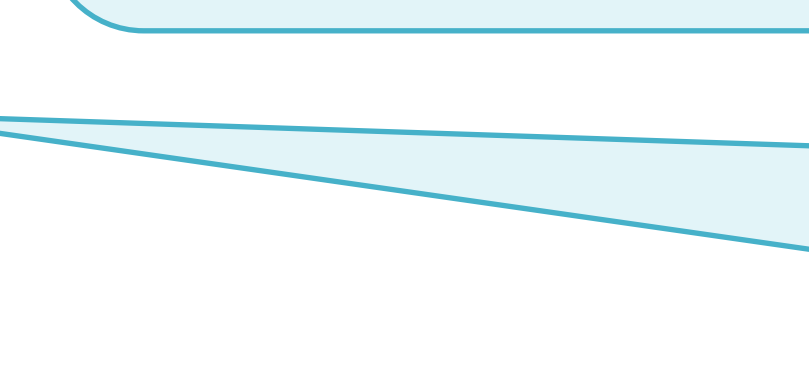
Aimee (BMedSci student) interviewed practice staff about the IMP2ART review template

• McClatchey K, Sheldon A, et al. Development of a patient-centred electronic review template to support self-management in primary care. *BJGP Open* 30 May 2023; BJGPO.2022.0165



Liz and Mary (MPH students) undertook a mixed methods systematic review on use of templates in LTC reviews

• Morrisey M, Shepherd E, et al. Effectiveness and perceptions of using computer templates in long-term condition reviews: a systematic synthesis of quantitative and qualitative studies. *Br J Gen Pract* 2021;71:e652-e659

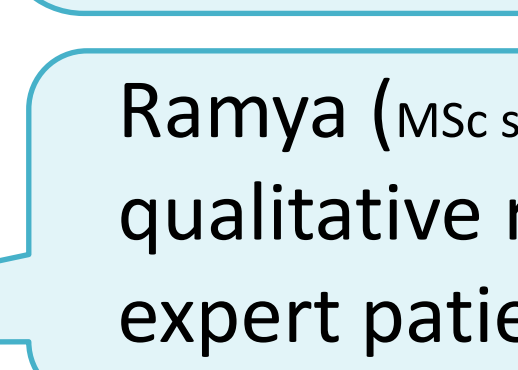


Hannah (BMedSci student) interviewed PPI colleagues and developed a survey on remote consulting

Rithin and Harris (BMedSci students) interviewed people with asthma about the impact of COVID on their psychological well-being

Daisy (BMedSci) analysed the IMP2ART internal pilot interview transcripts

• McClatchey K, Bertram D, et al. IMplemEnting IMProved Asthma self-management as RouTine in primary care: an internal pilot for a cluster randomised controlled trial. Submitted to *PlosOne*



Ramya (MSc student) carried out qualitative research with expert patients

Neel (BSc student) is undertaking a patient/survey based on Ramya's findings

Global health grants often have a budget for capacity building, enabling teams to allocate funded time for supervising student projects, or supervising an aligned PhD student. This is rarely explicit within UK grants, limiting the contribution specific research projects can make to capacity building.

We are now supporting IMP2ART early career researchers to apply for the newly-launched NIHR mid-PDGs:

- The challenges of reducing inequity in provision of supported self-management

For more information contact: imp2art@ed.ac.uk

visit our website: www.ed.ac.uk/usher/imp2art

[@imp2art](https://twitter.com/imp2art)

aukcar.ac.uk

[@aukcar](https://twitter.com/aukcar)



THE UNIVERSITY of EDINBURGH



Queen Mary University of London



Swansea University Prifysgol Abertawe



The University of Sheffield



PCRS

NHS Kent and Medway



Asthma UK Centre for Applied Research



ASTHMA+LUNG UK



NIHR

National Institute for Health and Care Research



Optimum Patient Care



education for health



University of Huddersfield



UCL