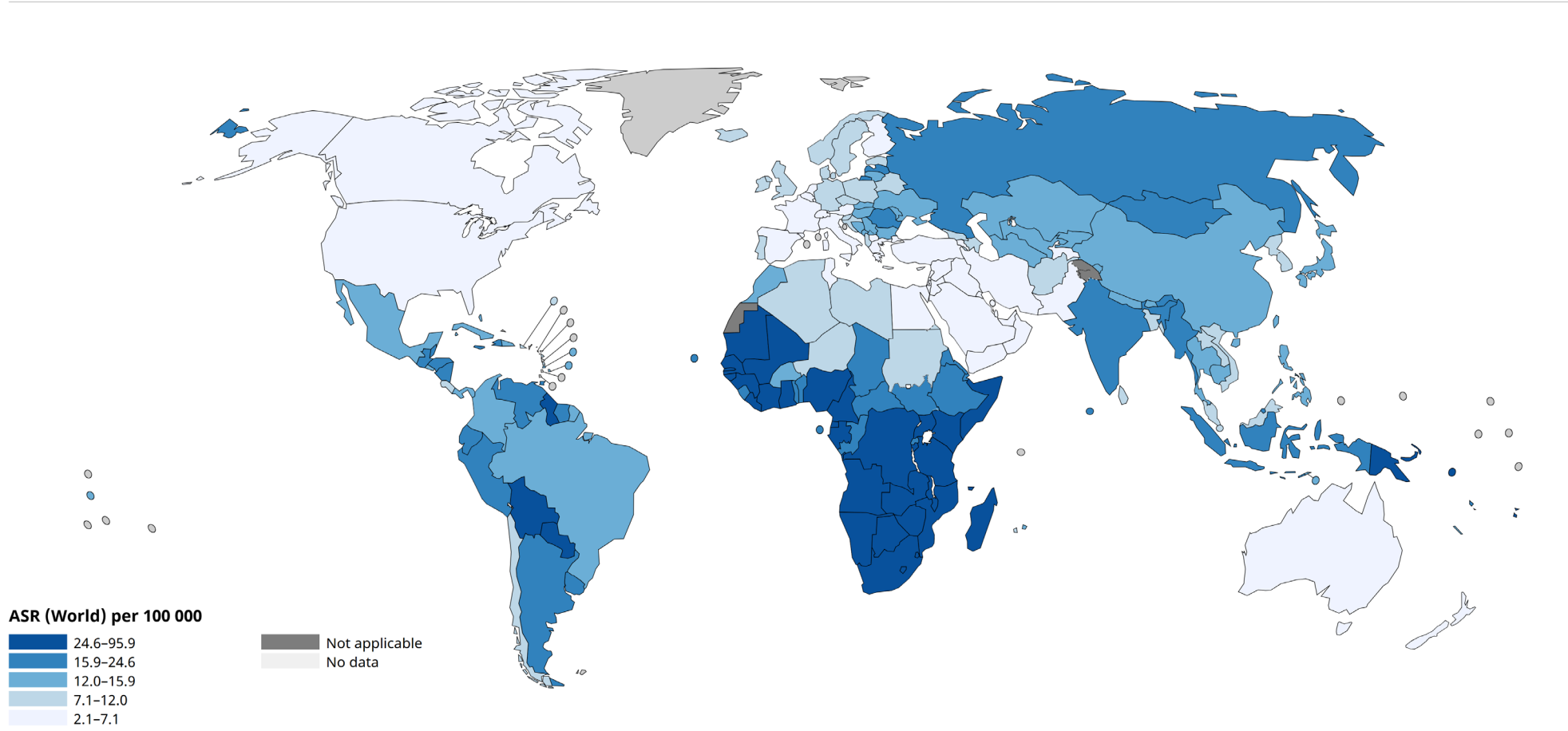


Strengthening health care for women in rural Malawi through screening for cervical cancer

Dr Christine Campbell, Heather Cubie, Beatrice Kabota, Anna Balley, Harriet Chirwa, Angella Chiwaya, Miriam Deeny, Wendy McMullen, Isabel Bruce, Yowati Nthenga, Agness Nyanda, Themba Mzilahowa, all screening colleagues in Malawi



Burden of cervical cancer in Low and Middle Income Countries



All rights reserved. The designations employed and the presentation of the material in this publication do not imply the expression of any opinion whatsoever on the part of the World Health Organization / International Agency for Research on Cancer concerning the legal status of any country, territory, city or area or of its authorities, or concerning the delimitation of its frontiers or boundaries. Dotted and dashed lines on maps represent approximate borderlines for which there may not yet be full agreement.

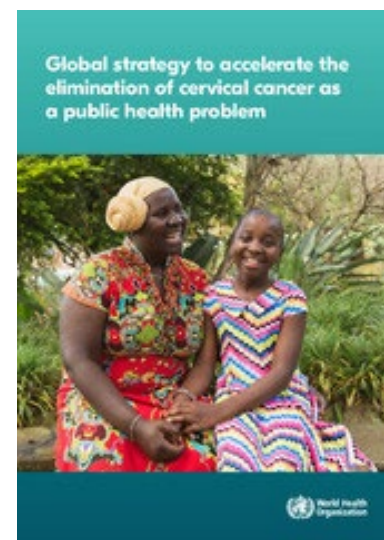
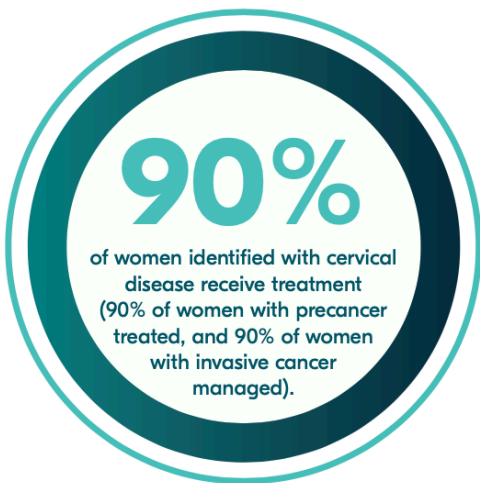
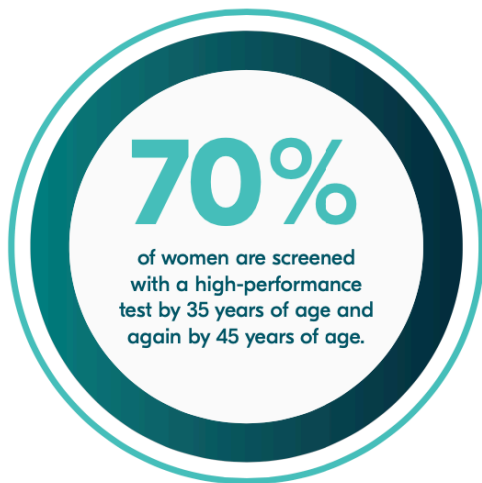
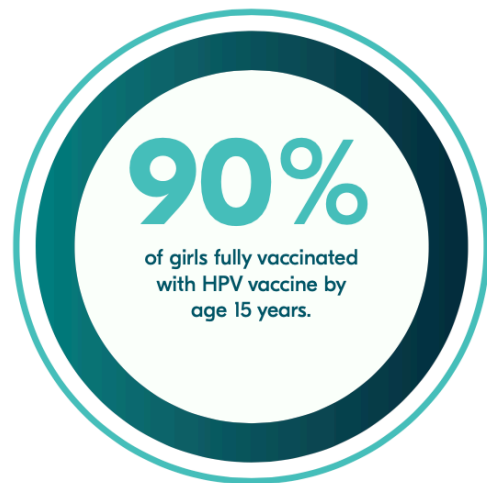
Cancer TODAY | IARC
<https://gco.iarc.who.int/today>
 Data version: Globocan 2022 (version 1.1) - 08.02.2024
 © All Rights Reserved 2025

International Agency
for Research on Cancer

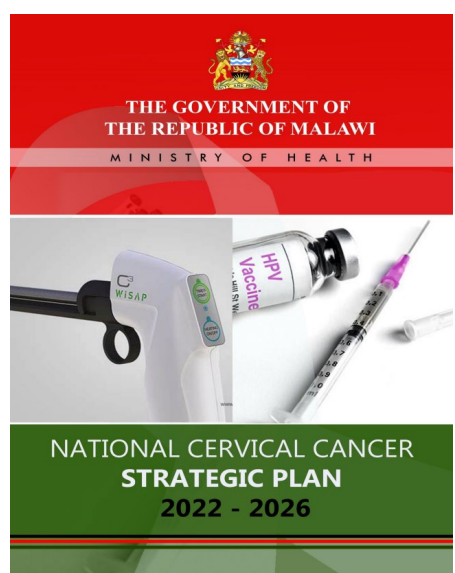
 World Health
Organization

WHO elimination strategy

- a vision of a world where cervical cancer is eliminated as a public health problem;
- a threshold of 4 per 100 000 women-years for elimination as a public health problem;
- the following 90-70-90 targets that must be met by 2030 for countries to be on the path towards cervical cancer elimination:



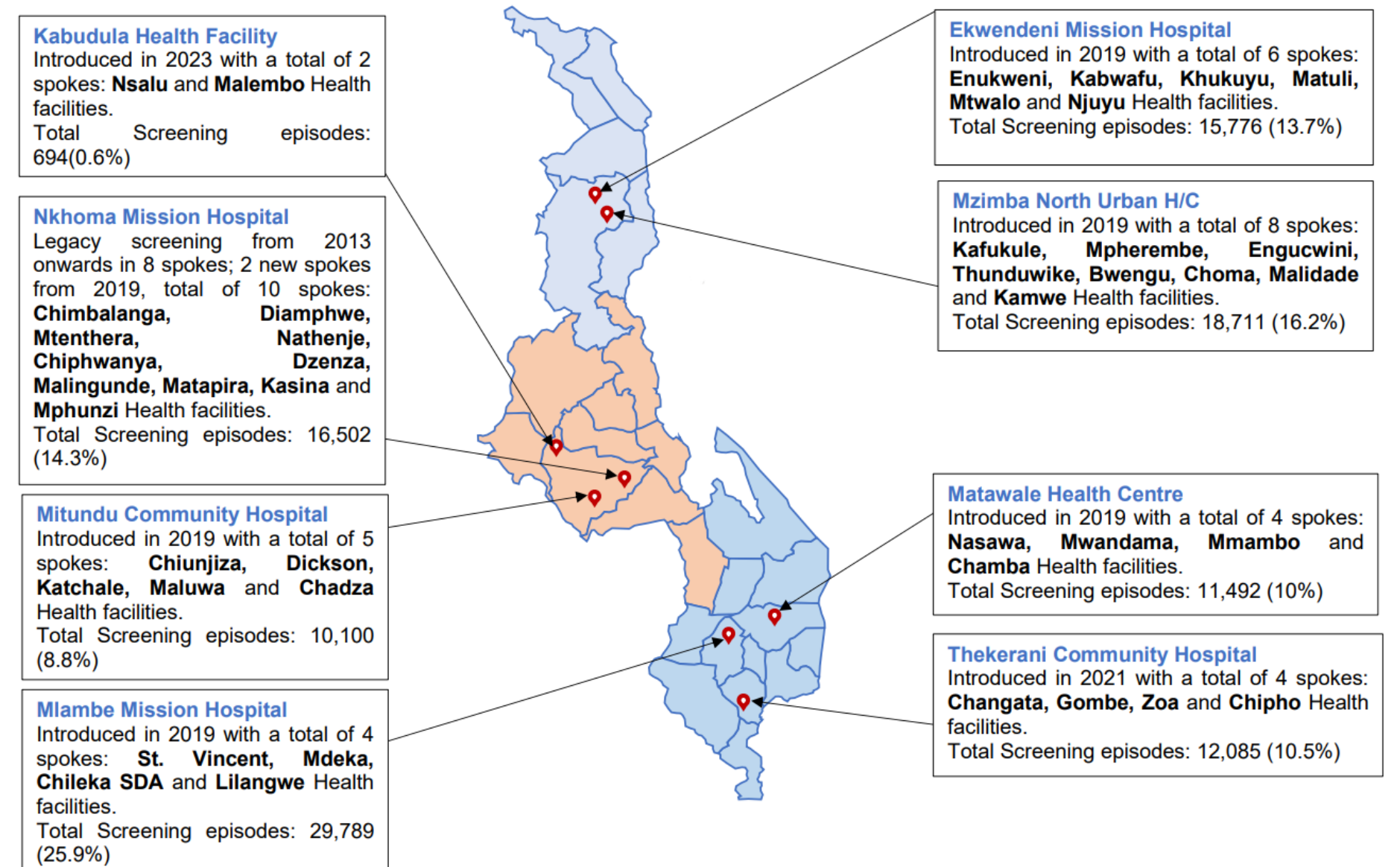
- **Malawi** has the second highest global incidence and highest global death rate of cervical cancer
- Many of these deaths could be prevented by effective screening and treatment



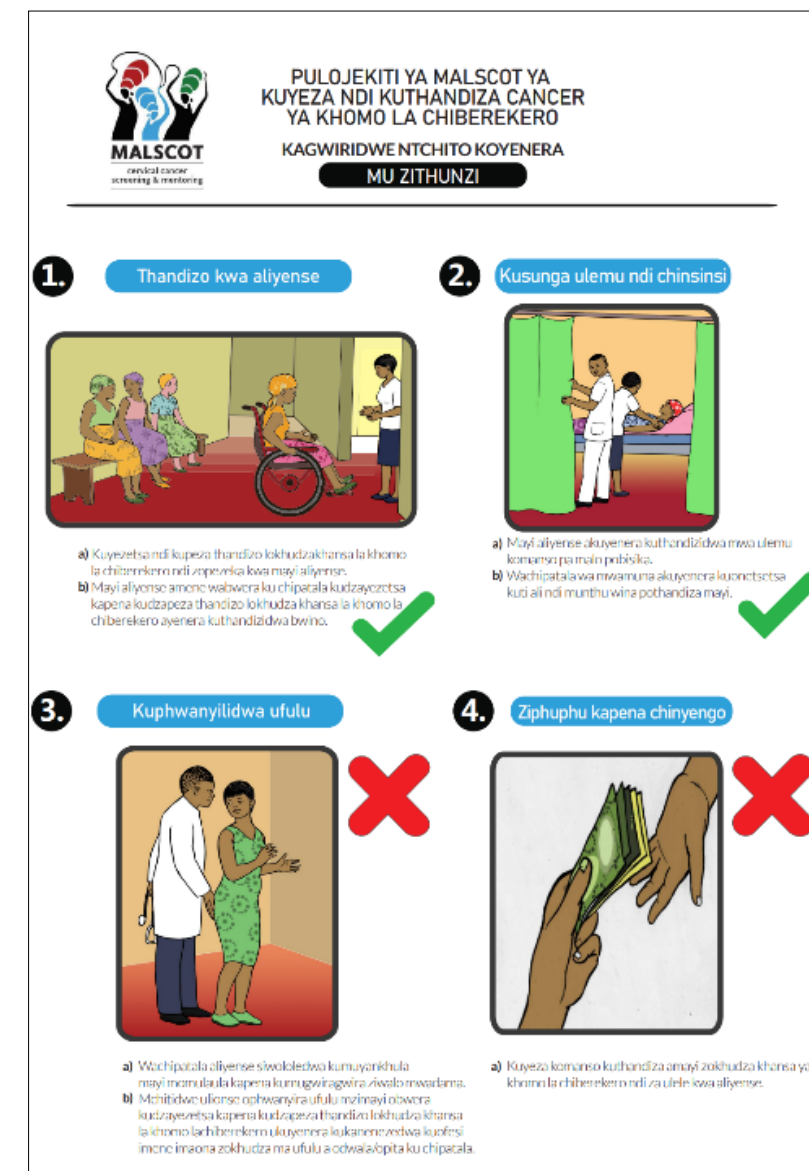
MALSCOT screening & mentoring approach

- Funded by the Scottish Government International Development Fund, collaboration with Malawi Ministry of Health, Oct 2018 to March 2024
- Community sensitisation, awareness raising, traditional leaders
- MoH and experiential training of newly-trained staff, and Continuous Professional Development
- Mentoring Toolkit developed and Mentoring programme implemented, now 25 trained mentors
- 116 nurse providers trained and mentored, received independent Ministry of Health accreditation
- Refurbishment and equipping of 42 health centre clinics

Screening provision in under-served rural areas, reaching over 100,000 women



Safeguarding policy 'Kudziteteteza'



- Meaningful, in-country policy c.f. culturally different or inappropriate concepts
- Developed with input from civil society organisations
- Safeguarding Policy and summary guidance; Infographics in Chichewa, Tumbuka; Reporting forms; adopted nationally

Inclusion health perspective

Ensuring vulnerable and excluded women have the opportunity to access the service

- Over 3000 received tailored screening
- women living with albinism
- women with physical or intellectual disabilities
- women from blind and deaf communities
- transactional sex workers
- women with psychiatric needs



PHOTO USED WITH CONSENT

Sustainability going forward

- District Health Offices to provide basic supplies
- Integration with HIV, family planning & Under-5s
- Continuing clear community engagement messages
- Challenges include stigma, pathways of care

More information: Christine.Campbell@ed.ac.uk

