

# Exploring DataLoch: collaborations to enhance data useability and availability

The DataLoch Team: <https://dataloch.org/about-us/meet-the-team>

University of Edinburgh / NHS Lothian; contact: [dataloch@ed.ac.uk](mailto:dataloch@ed.ac.uk)

## What is DataLoch?

Part of the Scottish Safe Haven Network, DataLoch is a data service developed in partnership by the University of Edinburgh and NHS Lothian, underpinned by public involvement and engagement. We:

- bring together health and social care data for the South-East Scotland region;
- work with experts in health and social care to understand and improve these data; and
- provide safe access to data for health data research through our Secure Data Environment and for clinical studies.

Working collaboratively, these efforts allow a holistic data-driven approach to the prevention and treatment of different conditions, as well as the provision of health and social care services more broadly. Ultimately, we support projects that improve the health and wellbeing of the nation.

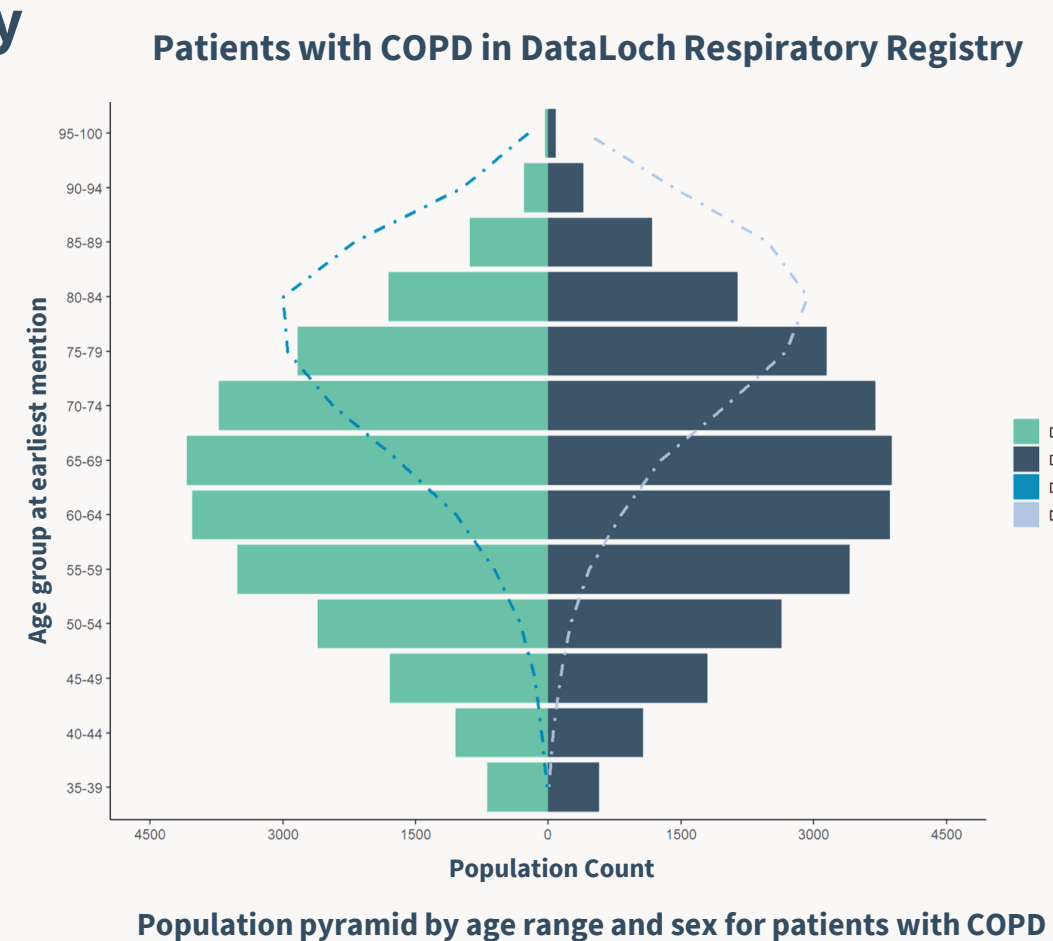
**An important aspect of our service is collaborating with researchers on funded projects to refine and expand the datasets available for cutting-edge research**

## DataLoch Registries

Theme-specific databases on specific health conditions or diseases that substantially simplify the data-selection process for researchers.

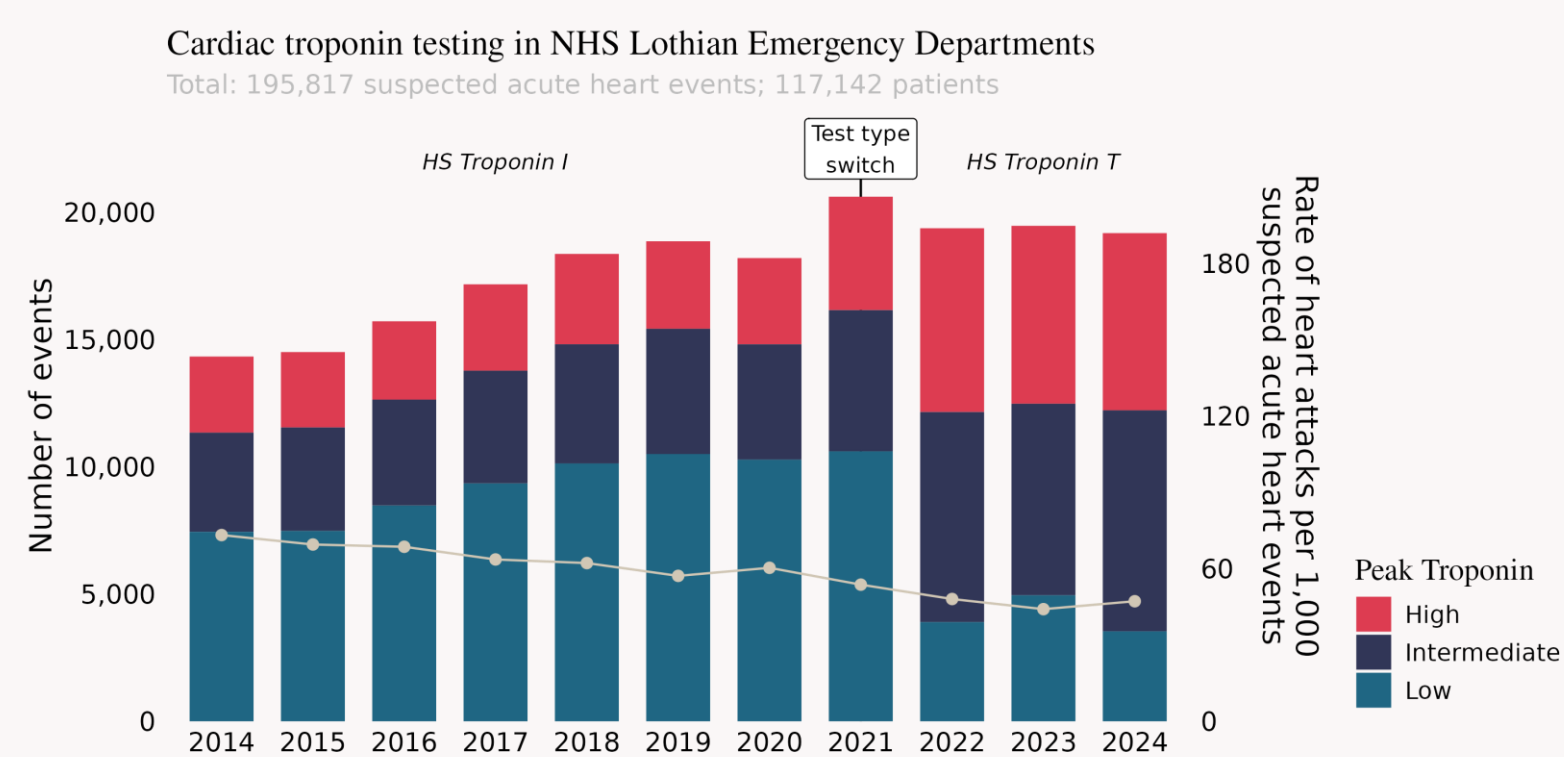
### DataLoch Respiratory Registry

Harmonised with related registries covering England and Wales, our registry includes South-East Scotland residents with chronic respiratory conditions, such as Asthma, Chronic Obstructive Pulmonary Disease (COPD), and Interstitial Lung Disease (ILD).



### DataLoch Heart Disease Registry

This registry focusses on patients with cardiovascular conditions in Lothian, including acute and chronic coronary syndromes, heart failure, atrial fibrillation, and valvular heart disease. The data covers more than 160,000 Emergency Departments visits.



Two further registries that cover **Cancer** and **COVID-19** are also available.

## Novel data collaborations

We are enabling ground-breaking projects by accessing new datasets through bespoke, externally funded development work.

A key benefit of these collaborations is the goal of new data being added to our repository for use within other projects.

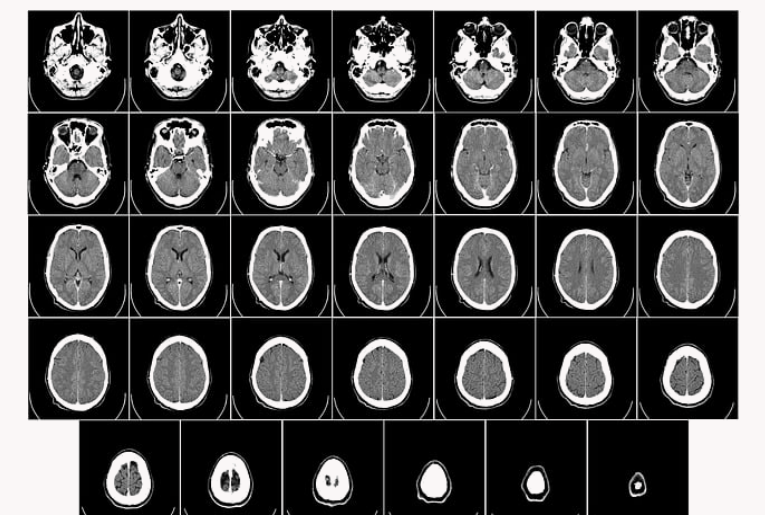
### 1. Waveform data – a Wellcome-funded project



We are collaborating with the ICU-Heart research group on several projects around intensive care. A crucial foundation is physiological waveform data, such as ECG traces, which would enable systematic diagnosis of heart attacks in patients admitted to intensive care units.

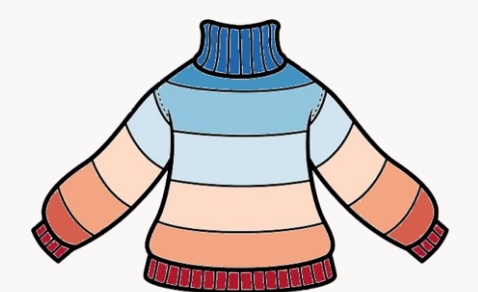
### 2. Imaging data – NHS Innovation Fellowship

To supplement the research-ready Scottish Medical Imaging dataset, we have developed a process to safely link medical images to other healthcare data. DICOM image data – such as CT scans or X-Rays – can now be accessed, de-identified and made available for research.



### 3. Energy Performance Certificates – a Wellcome-funded collaboration

The Homes, Heat and Healthy Kids study is focused on the effect of energy poverty on children's health. We have brought in home-energy efficiency data as part of curating a new environmental dataset for researchers.



**Talk to Us!**

You can find out more about the data we host through our Metadata Catalogue. However, if the data you need are not there, we are keen to collaborate on funding proposals that will secure new datasets for novel research.

**Talk to the DataLoch team** and explore how we can support your work.

**Connect with Us online:**



**Email:** [dataloch@ed.ac.uk](mailto:dataloch@ed.ac.uk)

