

101034339 – PROMISE

Preparing for RSV Immunisation and Surveillance in Europe

WP1 – RSV epidemiology and impact of COVID-19

## D1.3 Report on RSV burden in pregnant women

|                           |   |
|---------------------------|---|
| <b>Lead contributor</b>   | Harish Nair (1 – UEDIN)<br>harish.nair@ed.ac.uk   |
| <b>Other contributors</b> | Sebastien Kenmoe (1 – UEDIN)<br>You Li (Nanjing Medical University)   |
| <b>Reviewers</b>          | Jessica Atwell (21 – Pfizer); Louis Bont (2 – University Medical Centre Utrecht); Mark Miller (University of Gothenburg); |

### Document History

| Version | Date       | Description   |
|---------|------------|---|
| V0.1    | 11/07/2023 | First Draft   |
| V0.2    | 20/07/2023 | The comments from internal Peer Reviewers integrated. |
| V0.3    | 04/08/2023 | The comments of SC incorporated.                      |
| V0.4    | 28/08/2023 | The comments of US CDC Reviewers incorporated         |
| V1.0    | 14/09/2023 | Final Version   |

Reproduction of this document or part of this document without PROMISE consortium permission is forbidden. Any use of any part must acknowledge the PROMISE consortium as "This project has received funding from the Innovative Medicines Initiative 2 Joint Undertaking under grant agreement 101034339. This Joint Undertaking receives support from the European Union's Horizon 2020 research and innovation programme and EFPIA". This document is shared within the PROMISE Consortium and is in line with the general communication guidelines described in the PROMISE Consortium Agreement.

## Table of contents

|  |    |
|--|----|
| Table of contents .....  | 2  |
| Definitions .....  | 3  |
| Abbreviations .....  | 4  |
| Abstract .....   | 5  |
| 1. Introduction .....  | 6  |
| 2. Methods .....   | 7  |
| 2.1. Design.....   | 7  |
| 2.2. Risk of bias and data analysis .....  | 7  |
| 3. Results .....   | 9  |
| 3.1. Study selection.....  | 9  |
| 3.2. Studies characteristics .....   | 9  |
| 3.3. Risk of bias of included studies .....  | 9  |
| 3.4. Proportion of pregnant individuals with RSV-positive acute respiratory infections ..              | 10 |
| 3.5. Incidence rate of RSV in pregnant individuals .....   | 11 |
| 3.6. RSV-associated hospitalizations in pregnant individuals .....                                     | 11 |
| 3.7. RSV-associated deaths in pregnant individuals with acute respiratory infections ...               | 12 |
| 3.8. Perinatal outcomes in pregnant individuals with RSV-associated acute respiratory infections ..... | 12 |
| 4. Discussion.....   | 14 |
| 5. Conclusion .....  | 16 |
| 6. References.....   | 17 |
| ANNEXES .....  | 21 |
| ANNEX I. Supplementary material .....  | 21 |

## Definitions

- **Participants** of the PROMISE Consortium are referred to herein according to the following codes:
  1. **UEDIN.** The University of Edinburgh (United Kingdom)
  2. **UMCU.** Universitair Medisch Centrum Utrecht (Netherlands)
  3. **UA.** Universiteit Antwerpen (Belgium)
  4. **Imperial.** Imperial College of Science, Technology and Medicine (United Kingdom)
  5. **UOXF.** The Chancellor, Masters and Scholars of the University of Oxford (United Kingdom)
  6. **THL.** Terveysten Ja Hyvinvoinnin Laitos (Finland)
  7. **RIVM.** Rijksinstituut voor Volksgezondheid en Milieu (Netherlands)
  8. **NIVEL.** Stichting Nedelands Instituut voor Onderzoek van de Gezondheidszorg (Netherlands)
  9. **TUCH.** Varsinais-Suomen Sairaanhoidopiirin Kuntayhtymä (Finland)
  10. **TEAMIT.** TEAM IT Research, S.L. (Spain)
  11. **ReSVINET.** Stichting Resvinet (Netherlands)
  12. **SSI.** Statens Serum Institut (Denmark)
  13. **SERGAS.** Servizo Galego de Saúde (Spain)
  14. **PENTA.** Fondazione PENTA - For the treatment and care of children with HIV and related diseases - ONLUS (Italy)
  15. **FISABIO.** Fundación para el Fomento de la Investigación Sanitaria y Biomédica de la Comunitat Valenciana (Spain)
  16. **MLU.** Martin-Luther-Universitaet Halle-Wittenberg (Germany)
  17. **SP.** Sanofi Pasteur, S.A. (France)
  18. **GSK.** GlaxoSmithKline Biologicals, S.A. (Belgium)
  19. **JANSSEN.** Janssen Pharmaceutica, N.V (Belgium)
  20. **Novavax.** Novavax, Inc. (United States)
  21. **Pfizer.** Pfizer Limited (United Kingdom)
  22. **AZ.** AstraZeneca AB (Sweden)
  
- **Grant Agreement.** (Including its annexes and any amendments) The agreement signed between the beneficiaries of the action and the IMI2 JU for the undertaking of the PROMISE project (Grant Agreement No. 101034339).
- **Project.** The sum of all activities carried out in the framework of the Grant Agreement.
- **Work plan.** Schedule of tasks, deliverables, efforts, dates and responsibilities corresponding to the work to be carried out, as specified in Annex I to the Grant Agreement.
- **Consortium.** The PROMISE Consortium, comprising the above-mentioned participants.
- **Consortium Agreement.** The agreement concluded amongst PROMISE participants for the implementation of the Grant Agreement. The agreement shall not affect the parties' obligations to the Community and/or to one another arising from the Grant Agreement.

## Abbreviations

| Acronym /<br>Abbreviation | Meaning                      |
|---------------------------|------------------------------|
| RSV                       | respiratory syncytial virus  |
| ARI                       | acute respiratory infections |
| wGA                       | weeks' gestational age       |

## Abstract

**Introduction** With the licensure of maternal RSV vaccines in Europe and USA, data are needed to better characterize the burden of respiratory syncytial virus (RSV)-associated acute respiratory infections (ARI) in pregnancy. This study aims to determine among pregnant individuals the proportion of ARI testing positive for RSV and RSV incidence rate, RSV-associated hospitalizations, deaths, and perinatal outcomes.

**Methods** We conducted a systematic review following PRISMA 2020 guidelines using five databases (Medline, Embase, Global Health, Web of Science and Global Index Medicus) and included additional unpublished data. Pregnant individuals with respiratory infections who had respiratory samples tested for RSV were included. We used a random-effects meta-analysis to generate overall proportions and rate estimates across studies.

**Results** Eleven studies with relevant data covering 2010-2022 were identified, most of which recruited pregnant individuals in community, inpatient and outpatient settings. Among 8126 pregnant individuals, the proportion with respiratory infections that tested positive for RSV ranged from 0.9% to 10.7%, with a meta-estimate of 3.4% (95% CI: 1.9; 54). The pooled incidence rate of RSV infection episodes among pregnant individuals was 26.0 (15.8; 36.2) per 1000 person-years. RSV hospitalization rates reported in two studies were 2.4 and 3.0 per 1000 person-years. Of five studies that ascertained RSV-associated deaths among 4708 pregnant individuals, no deaths were reported. Three studies comparing RSV-positive and RSV-negative pregnant individuals found no difference in odds of miscarriage, stillbirth, low birth weight, and small for gestational age. RSV-positive pregnant individuals had higher odds of preterm delivery (odds ratio 3.6 [1.3; 10.3]).

**Conclusion** RSV incidence rates in pregnant individuals may be comparable to those in non-pregnant adults aged 18-49 years with underlying medical conditions. Data on RSV-associated hospitalization incidence rates are limited but available estimates are lower than those reported in older adults and young children. As countries debate whether to include RSV vaccines in maternal vaccination programs, which are primarily intended to protect infants, this information could be useful in shaping vaccine policy decisions.

## 1. Introduction

Respiratory syncytial virus (RSV) is a major respiratory pathogen that can cause acute respiratory infections (ARI) in people of all ages and can infect people multiples times throughout their lives. Severe manifestations disproportionately affect those at the extremes of age, causing a significant disease burden in these population groups [1-3]. Pregnant individuals, with their inherent immunological changes, could be at an increased risk of severe RSV infection, but RSV infections in pregnant individuals remain poorly characterized [4]. During pregnancy, maternal RSV antibodies are actively transferred across the placenta to the fetus and later provide some immunity to young infants [5, 6]. Higher titers of maternal antibodies, especially against F protein in prefusion (preF) conformation reduce the risk of severe disease in infants [7]. Passive immunization during pregnancy has been used successfully to protect young infants from diseases such as tetanus, pertussis, influenza, and SARS-CoV-2 [8-11]. Maternal immunization also provides direct benefits to pregnant individuals by reducing risk of infection and associated complications during the pregnancy and postpartum periods [8-12]. RSV vaccines for pregnant individuals have recently been licensed in USA and Europe. While the primary goal of antenatal RSV vaccination is focused on providing protection to young infants, antenatal vaccination could also have protective benefits for pregnant individuals and the pregnancy as has been documented for other maternal immunizations [8, 12]. We conducted a systematic review and meta-analysis of studies that included pregnant individuals with ARI who underwent testing for RSV infection to estimate the proportion of ARI episodes that tested positive for RSV, incidence rates of antenatal RSV infection, and numbers of RSV-associated hospitalizations and deaths. We also characterized RSV-associated perinatal outcomes.

## 2. Methods

### 2.1. Design

We searched articles in 5 databases: Medline (Ovid), Embase (Ovid), Global Health (Ovid), Web of Science, and Global Index Medicus. Search terms that broadly included RSV and pregnant individuals are provided in Supplementary table 1. The database searches included the period from January 1, 1996 to November 24, 2022 without any language restriction. We also manually searched the reference list of eligible studies identified from databases to identify additional eligible studies. When published data were insufficient for meta-analysis or when data collection continued after publication, we contacted pharmaceutical companies and observational study authors to obtain additional unpublished data pertinent to our review. We decided a priori that if two or more published reports were from the same study or if the unpublished data overlapped with the published report, then the dataset which provided data for the maximum length of time or which provided the most details would be included in the analysis. We registered the systematic review on the international prospective register of systematic reviews (PROSPERO) database (CRD42022372847) and followed the PRISMA 2020 reporting guidelines while conducting the review [13].

We included data from observational studies related to pregnant individuals with study-defined ARI who had been tested for RSV by culture, antigen, serology, and molecular testing (Supplementary table 2). The definition of ARI varied from study to study. Given the scarcity of data on RSV in pregnant individuals, we broadened our clinical definition criteria and included influenza-like illness (ILI) and severe acute respiratory infections (SARI). We excluded studies not focused on pregnant individuals, studies where clinical specimens were not laboratory tested for RSV, conference abstracts, reviews, and case reports. We developed and piloted a data extraction template. The literature search, study selection and data extraction were carried out independently by two reviewers (HM and SK). Any disagreements were resolved through mutual discussion or with the help of an arbiter (HN).

### 2.2. Risk of bias and data analysis

The risk of bias in the included studies was assessed using the Joanna Briggs Institute scale (Supplementary table 3). Data analyses were conducted using R version 4.0.3 software [14]. We used a random-effects meta-analysis to estimate the proportion of pregnant individuals with ARI who tested positive for RSV and the RSV incidence rate among pregnant individuals. When necessary, we converted the incidence rates from person-months to person-years by multiplying the person-months by 12. Subgroup analyses were performed based on the case identification settings and whether the study period was seasonal or throughout the year. Seasonal studies were defined as those conducted during RSV epidemic periods, which typically occur from October to May in temperate regions and at different times in tropical regions [15]. An evaluation of publication bias was conducted using funnel plot asymmetry and a weighted Egger's regression test with a threshold of 0.05 [16]. For proportion positive among pregnant individuals with ARI, we did a sensitivity analysis which involved excluding one study at a time to evaluate its influence on the overall outcome [17]. We described in pregnant individuals the RSV-associated hospitalization rate, the proportion hospitalized of pregnant individuals with RSV-associated ARI, the proportion with RSV infection of pregnant individuals with ARI-associated hospitalizations, and the number of RSV-associated deaths among those with ARI. We used random-effects meta-analysis to determine the proportions of specific perinatal outcomes among pregnant individuals with RSV-associated ARI: preterm birth (birth before 37 weeks' gestational age (wGA)), low birth weight (<2500 g), stillbirth, and miscarriage. The cut-off point for miscarriage and stillbirth was 20 wGA, with miscarriage defined as

spontaneous loss of pregnancy before 20 weeks and stillbirth as death of the fetus at or after 20 weeks. We also estimated using random-effects meta-analysis the association between RSV infection and perinatal outcomes.

## 3. Results

### 3.1. Study selection

A search of databases yielded a total of 630 records (Supplementary figure 1). Among these, 602 were excluded as they did not meet the eligibility criteria, leaving 28 full-text articles for further assessment. Out of these 28 studies, 22 were excluded and 2 additional records were identified through citation searching. We did not include any unpublished data from the placebo arm of recent Phase II/III RSV maternal vaccine trials as they did not follow up pregnant individuals for ARI or test them for RSV (Pfizer PF-06928316); the Phase III trials were conducted during the COVID-19 pandemic when RSV activity in general was very low across most sites (Pfizer and GlaxoSmithKline RSV MAT-009); and recruitment was halted midway following a recommendation by the independent data monitoring committee (GSK). We also did not include data from Phase III Novavax RSV-M-301 as ascertainment of RSV disease in the pregnant individuals was passive and the number of individuals positive for RSV-ARI was in the low single digits. Unpublished data were made available by the authors of 3 additional observational studies. We excluded one previously published article that met the inclusion criteria due to its overlap with unpublished data [18]. Finally, a total of 11 studies (8 published and 3 unpublished) were included in the analysis for this systematic review [19-26].

### 3.2. Studies characteristics

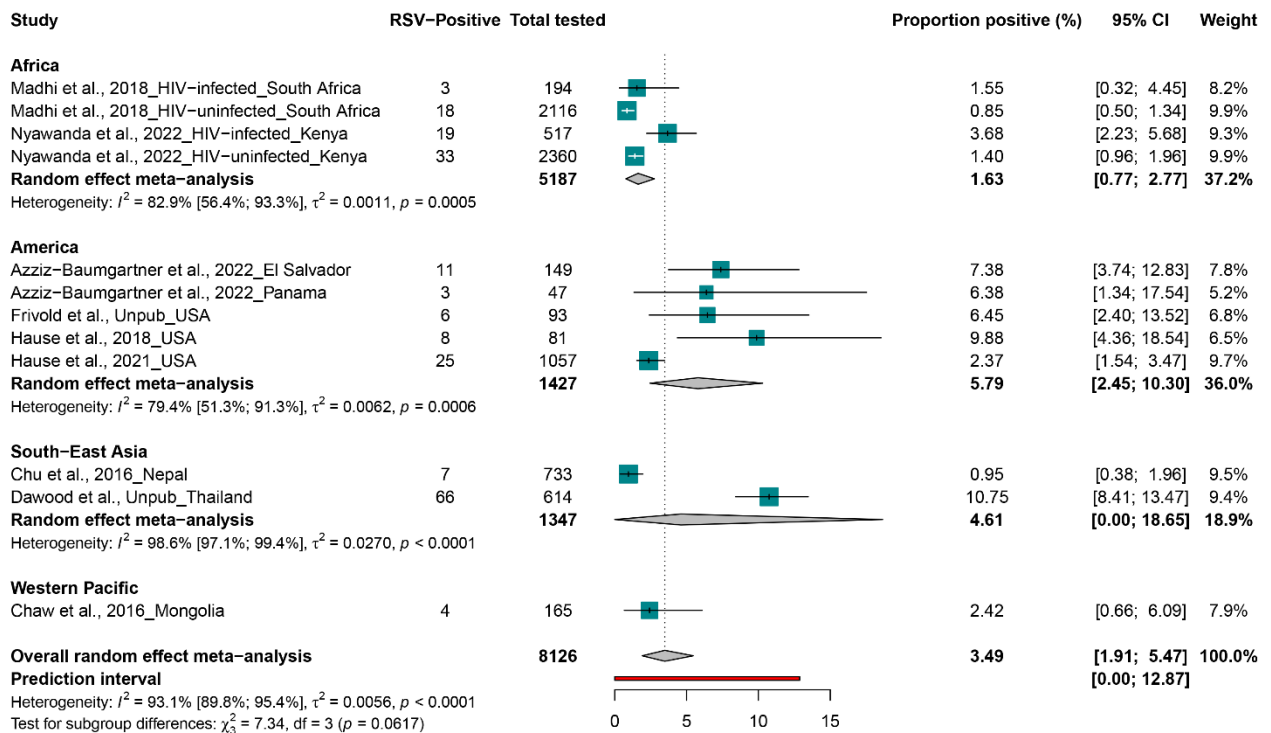
The period of data collection in the included studies ranged from 2010 to 2022 (Supplementary table 4). Except for RSV-associated deaths, all other estimates are based on data collected during the pre-COVID-19 pandemic era. Of all 11 included studies, eight were cohort studies, while the remaining three were cross-sectional studies. Six studies were conducted in high-income countries (Australia, Canada, Israel, Panama, and the United States); four in lower-middle-income countries (El Salvador, Kenya, Mongolia, and Nepal); and two in upper-middle-income countries (South Africa and Thailand). Four studies were conducted year-round, lasting between two and six years, and seven were conducted seasonally, lasting from one to eight seasons. One study reported data exclusively among outpatients, two studies exclusively among inpatients, and three studies exclusively in the community. In studies with a combination of settings three were in the community, outpatients, and inpatients and 2 were in outpatients and inpatients. Seven studies used ARI as the primary definition for inclusion. Meanwhile, other studies employed varying definitions which included criteria like RSV-positive, limiting to only febrile patients with ARI or including specific sub-populations, such as those living with human immunodeficiency virus (HIV) infection. The RSV diagnostic test used in most of the studies was polymerase chain reaction (PCR) (9 studies), with other methods including culture, antigen tests, and rapid diagnostic tests. Of studies that provided information about clinical specimen types four collected nasal swabs, three nasopharyngeal swabs, and one oropharyngeal swab. Of five studies with gestational age reported, one included pregnant individuals in all 3 trimesters, three in the second and third trimesters, and one in the first and second trimesters.

### 3.3. Risk of bias of included studies

The cohort studies presented a low risk of bias, with all studies achieving scores of 82% or more according to JBI assessment tools (Supplementary table 5) [19-21, 24-26]. Cross-sectional studies by Hause (2018) and Hause (2021) also displayed low risk of bias, with scores of 88% and 75%, respectively (Supplementary table 6) [23, 27].

### 3.4. Proportion of pregnant individuals with RSV-positive acute respiratory infections

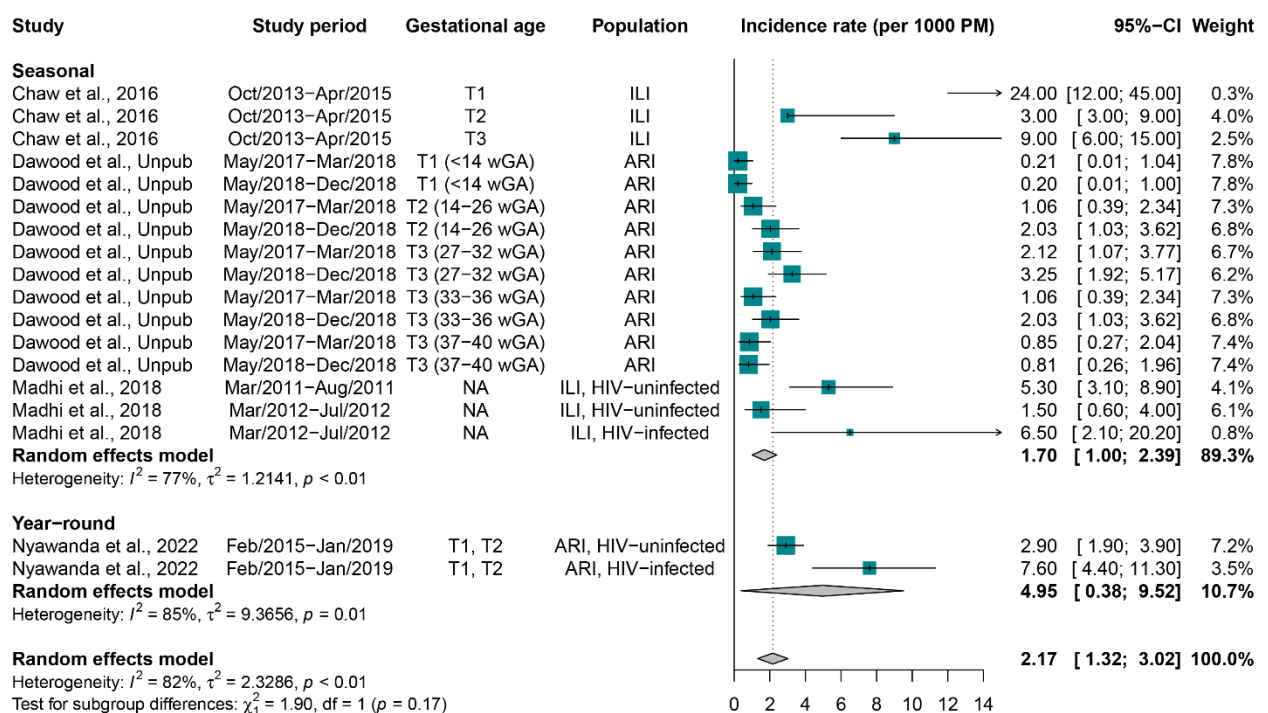
Supplementary table 7 reports the proportion of pregnant individuals with ARI who tested positive for RSV among studies that tested in the community, outpatient, or in-patient settings. These studies were conducted in Africa (Kenya and South Africa) [24, 25], Central America (El Salvador, Panama), North America (United States) [19, 22, 23], South-East Asia (Nepal and Thailand), and the Western Pacific (Mongolia) [20]. There were 203 cases of RSV infection among 8126 pregnant individuals tested, with the proportion of positive cases ranging from 0.9% in HIV-uninfected persons in South Africa to 10.7% in an unpublished study in Thailand. The pooled proportion of RSV positivity in pregnant individuals with ARI was 3.4% (95% confidence interval (CI): 1.9; 5.4) (Fig 1). After removing each study sequentially from the meta-analysis, the overall estimates ranged from 2.2% (95% CI: 1.3 to 3.2) to 4.1% (95% CI: 2.1 to 6.2) (Supplementary table 8). The Egger's test indicated publication bias ( $p=0.046$ ) although the funnel plot was not asymmetrical (Supplementary figure 2). In studies conducted during RSV seasons, the prevalence was 4.4% [95% CI: 0.8; 10.1], while in year-round studies, the prevalence was 2.5% [95% CI: 1.3; 4.0], with a statistically significant difference ( $p<0.001$ ) (Supplementary figure 3). The proportion of pregnant individuals positive for RSV was 9.8% [95% CI: 4.3; 18.5] among outpatients, 5.5% [95% CI: 0.6; 14.0] among community participants, 3.6% [95% CI: 0.3; 8.8] among outpatients and inpatients, and 1.7% [95% CI: 0.8; 2.7] among community, outpatient, and inpatient participants (Supplementary figure 4).



**Fig 1:** Proportion positive for RSV in pregnant individuals with acute respiratory infections

### 3.5. Incidence rate of RSV in pregnant individuals

Supplementary table 9 presents the incidence rate of RSV among pregnant individuals. The included studies were conducted in Kenya [25], South Africa [24], Thailand, and Mongolia [20]. All studies identified pregnant individuals across community, inpatient and outpatient settings, except unpublished data by Dawood where participants were identified only in the community in Thailand. The incidence rate of RSV varied from 0.2 per 1000 person-months among pregnant individuals in an unpublished study from Thailand to 24.0 per 1000 person-months in Mongolia. The RSV incidence rate meta-estimate in pregnant individuals diagnosed with ARI was 2.1 (95% CI: 1.3; 3.0) per 1000 person-months. The incidence rate was 1.7 (95% CI: 1.0; 2.3) per 1000 person-months in seasonal studies and 4.9 (95% CI: 0.3; 9.5) per 1000 person-months in year-round studies, with a statistically significant difference ( $p=0.170$ ) (Fig 2).



**Fig 2:** Incidence rate of RSV in pregnant individuals

ARI: Acute respiratory infections; HIV: human immunodeficiency virus; ILI: Influenza-like illness; NA: Not available; PM: person-months; RSV: Respiratory syncytial virus; T1: First trimester; T2: Second trimester; T3: Third trimester; wGA: weeks' gestational age

### 3.6. RSV-associated hospitalizations in pregnant individuals

RSV-associated hospitalizations in pregnant individuals were provided in ten studies, two reported hospitalization rates [19] (Dawood, unpublished data), five the proportion hospitalized among those with RSV-associated ARI episodes [21, 22, 24, 25] (Frivold, unpublished data), and three the proportion of ARI hospitalizations that were associated with RSV infection [20, 26] (Dawood, unpublished data).

One study conducted in El Salvador reported RSV hospitalization rate of 3.0 per 1000 person-years among pregnant individuals (Supplementary table 10) [19]. In an unpublished study from Thailand, a single case of RSV hospitalization was observed in a pregnant person and when extrapolated to the cohort population resulted in a hospitalization rate of 2.4 [0.4; 17.3] per

1000 person-years.

In a study by Hause and colleagues in the United States, out of 8 pregnant individuals with outpatient, medically attended ARI who tested positive for RSV, one required hospitalization (Supplementary table 11) [22]. In other studies, from South Africa [24], Kenya [25], Nepal [21], and the United States (Frivold, unpublished data), where 6853 individuals were tested, 86 were RSV-positive and no RSV-positive pregnant individuals were hospitalized.

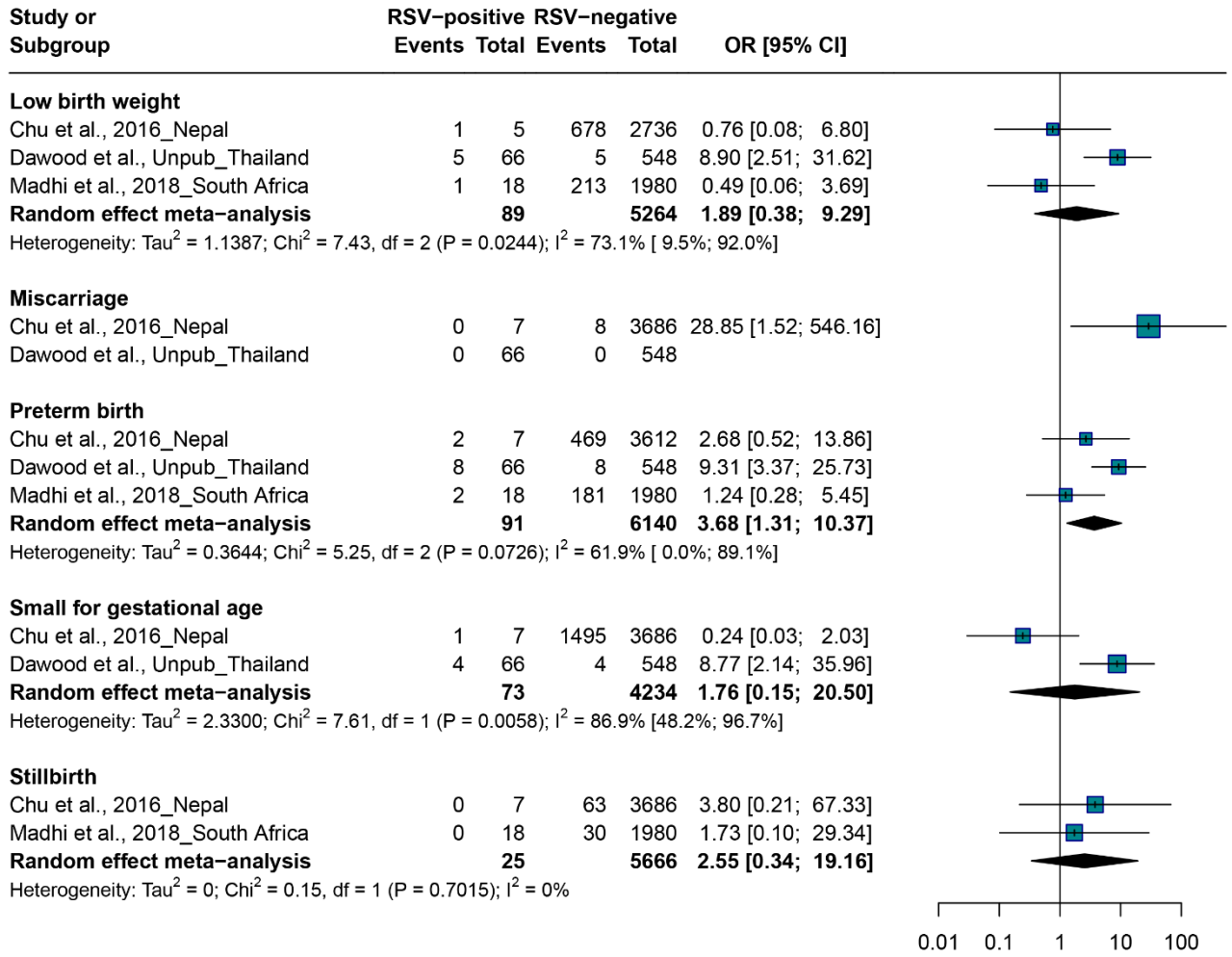
Three studies report data on the proportion of pregnant individuals hospitalized with ARI who tested positive for RSV (Supplementary table 12) [20, 26]. These studies reported data from Mongolia, Thailand, and a multicountry study across Australia, Canada, Israel, and the United States. The RSV positivity among pregnant individuals hospitalized with ARI ranged from 0% in the study in Mongolia to 9.1% in the unpublished study in Thailand.

### **3.7. RSV-associated deaths in pregnant individuals with acute respiratory infections**

We included 5 studies (from Mongolia, Nepal, United States, and Kenya) that reported data on 4708 pregnant individuals tested for RSV of which 203 were RSV-positive [20, 21, 25] (Frivold, unpublished data; Havers, unpublished data) (Supplementary table 13). No deaths were reported amongst these pregnant individuals.

### **3.8. Perinatal outcomes in pregnant individuals with RSV-associated acute respiratory infections**

Three studies conducted in Nepal, Thailand, and South Africa reported data on perinatal outcomes among pregnant individuals who tested positive for RSV [21, 24] (Dawood, unpublished data) (Figure 3 and Supplementary table 14). The RSV-positive pregnant individuals had seven infants with low birth weight (6.0%; 95% CI: 1.0; 13.4) and 12 preterm births (12.3%; 95% CI: 5.4; 20.8). Two of these studies provided data on small for gestational age births, stillbirths, and miscarriages. Of the pregnant women who tested positive for RSV in these studies, five of them delivered small for gestational age infants (5.1%; 95% CI: 0.4; 13.0), but no miscarriages or stillbirths were reported. Stillbirths, small for gestational age, miscarriage, and low birth weight did not differ by antenatal RSV infection status in three studies. There was a significant difference in odds of preterm birth between RSV-positive and RSV-negative pregnant individuals (OR = 3.6 [1.3; 10.3]).



**Fig 3:** Perinatal outcomes among pregnant individuals with and without RSV. For Chu et al., 2016, low birth weight was available for 5 babies born in RSV-positive groups and 2736 babies born in RSV-negative groups. Preterm birth was available for 7 babies born in RSV-positive groups and 3612 babies born in RSV-negative groups.

## 4. Discussion

This is the first study to summarize available evidence and quantify RSV-associated ARI burden among pregnant individuals, a population subgroup in whom RSV burden is poorly understood. We found that 3.4% (95% CI: 1.9; 5.4) of ARI episodes among pregnant individuals were associated with RSV infection. The estimated incidence rate of antenatal RSV infection was 2.1 (95% CI: 1.3; 3.0) per 1000 person-months or 26.0 (95% CI: 15.8; 36.2) per 1000 person-years. RSV-associated hospitalizations were uncommon, and no RSV-associated deaths were observed. Based on limited data from three studies, the odds of stillbirths, miscarriage, low birth weight, and small for gestational age did not differ between pregnant individuals who had antenatal RSV infection compared to those who did not, but antenatal RSV infection was associated with increased odds of preterm delivery (3.6 [1.3; 10.3]).

The paucity of data about the epidemiology of RSV among non-pregnant adults of reproductive ages limits comparisons of RSV incidences rates between non-pregnant and pregnant individuals. We estimated that the incidence of RSV was 26.0 per 1000 person-years in pregnant individuals, which is comparable to incidence rates reported among adults aged  $\geq 18$  years with underlying medical conditions or older adults aged  $\geq 60$  years [28, 29]. For adults  $\geq 18$  years with cardiopulmonary diseases, the incidence rate of RSV during the epidemic period was 19.1 cases per 1000 person-years [28]. In immunodeficient patients aged  $\geq 18$  years, a higher incidence rate was observed when studies covered the whole year (36.8 cases per 1000 person-years) which increased seven-fold when restricted to the epidemic period (260.8 cases per 1000 person-years). The proportion of pregnant individuals with ARI who were RSV-positive was found to be 3.4%, which is similar to previous studies conducted in adults aged  $\geq 16$  years [29-31]. Based on these numbers, proportion of ARI cases positive for RSV among pregnant individuals lies between adults aged  $\geq 16$  years with community-acquired pneumonia (2%; 95% CI=1-3) and adults with comorbidities (11%; 95% CI=7-16) [28, 30].

Limited data on RSV-associated hospitalizations suggests hospitalization rates of 2.4 and 3.0 per 1000 person-years, which is substantially higher than rates for the 50-64-year age group in both high-income and low- and middle-income countries (0.2 and 0.3 per 1000 person-years, respectively) [32]. However, limited data and different testing and hospital admission practices among pregnant individuals compared with non-pregnant individuals may lead to biased estimates. Among prospective studies included in this meta-analysis, only a single hospitalization event was observed among RSV-positive pregnant individuals with ARI which align closely with those over 60 years (0.1%) and was substantially lower than in RSV infected adults aged  $\geq 18$  years with comorbidities (32%; 95% CI: 23-43) and RSV infected immunodeficient patients aged  $\geq 18$  years (38.3%; 95% CI: 29-48) [28, 33]. The proportion of RSV-positive cases among hospitalized pregnant individuals with ARI varied broadly from 0% to 9.1%, aligning with proportions among elderly individuals in high-income countries (6.1%) [34].

There were no reported deaths in the five contributing studies on RSV during pregnancy, which is lower than previous meta-analyses that demonstrated varying case fatality rates among adults aged  $\geq 18$  years or adults with comorbidities, which ranged between 1.4% and 11.0% [28, 29, 33-35]. In addition, observational studies have also shown cases of RSV-related deaths in hospitalized young adults [36-38].

Severe illnesses from respiratory infections like COVID-19 and influenza in pregnant individuals, particularly those requiring hospitalization, have been associated with an increased risk of numerous adverse outcomes [39-44]. Specifically, in the case of severe COVID-19 illness, there is an increased risk of preterm birth, fetal growth restriction, postpartum

hemorrhage, and stillbirth [39-42]. Similarly, severe illness from influenza during pregnancy, especially pandemic A/H1N1 influenza, is linked with a greater risk of adverse perinatal outcomes such as preterm birth [43, 44]. In this meta-analysis, among RSV infected during pregnancy, adverse perinatal outcomes include low-birth-weight infants (6.0%; 95% CI: 1.0; 13.4), preterm infants (12.3%; 95% CI: 5.4; 20.8) and small-for-gestational-age infants (5.1%; 95% CI: 0.4; 13.0), however the rates were not higher when compared to the general population of the countries involved [45-47]. The only exception was observed in the Nepal study, where preterm births among people with RSV in pregnancy exceeded the rate seen in the general population [48].

It is important to view the interpretation of these findings within the context of several limitations. Seven out of eleven studies only tested for RSV during the epidemic months and one was confined to a single season. Some were not explicitly oriented towards the RSV season, while others were aimed at the influenza season, which does not always coincide with the RSV season and thus might not fully capture RSV disease burden [49, 50]. Also, in most regions, RSV has seasonal circulation patterns and studies conducted during the perceived RSV season are expected to yield a higher proportion positive [51]. The limited number of studies, reflected in publication bias, coupled with their small sample sizes may lead to potentially imprecise estimates. Notably, we lack adequate data to stratify our estimates by income region, study settings, clinical definition of ARI, or gestational age. Limitations also arose from laboratory testing, as most included studies relying solely on PCR testing of one type of upper respiratory tract specimen, which could underestimate the true RSV burden, indicating the need for including serology tests in future research [52, 53]. The clinical case definitions for ARI used in the individual studies, along with the exclusion of non-febrile cases in some studies, could lead to further underestimation of RSV prevalence [54]. RSV proportion might also be underestimated due to the lack of clarity surrounding standard of care testing practices in pregnant individuals.

Our current understanding of RSV in pregnant individuals is based on a limited number of studies and participants, indicating the need for more studies. Placebo arms of future phase III maternal RSV vaccine trials could provide valuable RSV burden data through comprehensive prospective disease surveillance of pregnant individuals as well as their infants (as opposed to infants alone). Post-licensure studies of RSV vaccine effectiveness could also offer valuable insights into RSV-associated outcomes among unvaccinated pregnant individuals. Alongside increased testing for RSV in pregnant individuals with ARI, these approaches are crucial to capturing both the burden of RSV and the potential public health impact of maternal vaccines accurately. The adoption of standardized case definitions, testing, and reporting criteria through improved surveillance will facilitate more robust estimates of RSV disease burden in pregnant individuals. Further research could examine multiple pathogens, which would allow differentiation between RSV mono-infections and co-detection with other viruses. This advancement seems achievable given the broader adoption of multiplex testing in response to the COVID-19 pandemic.

## 5. Conclusion

The RSV incidence rates in pregnant individuals may be comparable to those observed in adults aged 18-49 years with comorbidities. Compared with older adults or young children, incidence of RSV-associated severe disease, particularly hospitalizations in pregnant individuals, appears to be lower. For an accurate and reliable assessment of both RSV-associated hospitalizations and deaths in pregnant individuals, more comprehensive research in this area is critical given the limited data available. Without further analyses comparing RSV-positive vs RSV-negative or ARI vs non-ARI groups, we are unable to draw conclusions from our findings at this point for potential correlations between RSV infection during pregnancy and perinatal outcomes. With the rollout of maternal RSV vaccines due to begin this autumn, these results underscore the need for ongoing research to ensure a comprehensive understanding of the effects of RSV infection during pregnancy the difference in the burden of RSV for pregnant individuals compared to healthy and other high-risk adults.

## 6. References

1. Li Y, Kulkarni D, Begier E, et al. Adjusting for Case Under-Ascertainment in Estimating RSV Hospitalisation Burden of Older Adults in High-Income Countries: a Systematic Review and Modelling Study. *Infectious diseases and therapy* 2023;1-13.
2. Li Y, Wang X, Blau DM, et al. Global, regional, and national disease burden estimates of acute lower respiratory infections due to respiratory syncytial virus in children younger than 5 years in 2019: a systematic analysis. *Lancet (London, England)* 2022; 399:2047-64.
3. Cong B, Dighero I, Zhang T, Chung A, Nair H, Li Y. Understanding the age spectrum of respiratory syncytial virus associated hospitalisation and mortality burden based on statistical modelling methods: a systematic analysis. *BMC medicine* 2023; 21:224.
4. Englund JA, Chu HY. Respiratory Virus Infection During Pregnancy: Does It Matter? *The Journal of infectious diseases* 2018; 218:512-5.
5. Simões EAF, Center KJ, Tita ATN, et al. Prefusion F Protein-Based Respiratory Syncytial Virus Immunization in Pregnancy. *The New England journal of medicine* 2022; 386:1615-26.
6. Nyiro JU, Bukusi E, Mwaengo D, et al. Efficiency of transplacental transfer of respiratory syncytial virus (RSV) specific antibodies among pregnant women in Kenya. *Wellcome open research* 2022; 7:43.
7. Koivisto K, Nieminen T, Mejias A, et al. Respiratory Syncytial Virus (RSV)-Specific Antibodies in Pregnant Women and Subsequent Risk of RSV Hospitalization in Young Infants. *The Journal of infectious diseases* 2022; 225:1189-96.
8. Nassar AH, Hobeika E, Chamsy D, El-Kak F, Usta IM. Vaccination in pregnancy. *International journal of gynaecology and obstetrics: the official organ of the International Federation of Gynaecology and Obstetrics* 2023; 162:18-23.
9. Halasa NB, Olson SM, Staat MA, et al. Effectiveness of Maternal Vaccination with mRNA COVID-19 Vaccine During Pregnancy Against COVID-19-Associated Hospitalization in Infants Aged <6 Months - 17 States, July 2021-January 2022. *MMWR Morbidity and mortality weekly report* 2022; 71:264-70.
10. Nunes MC, Madhi SA. Influenza vaccination during pregnancy for prevention of influenza confirmed illness in the infants: A systematic review and meta-analysis. *Human vaccines & immunotherapeutics* 2018; 14:758-66.
11. Vilajeliu A, García-Basteiro AL, Bayas JM. Protecting newborns against pertussis: the value of vaccinating during pregnancy. *Expert review of vaccines* 2015; 14:1051-3.
12. Abu-Raya B, Maertens K, Edwards KM, et al. Global Perspectives on Immunization During Pregnancy and Priorities for Future Research and Development: An International Consensus Statement. *Frontiers in immunology* 2020; 11:1282.
13. Page MJ, McKenzie JE, Bossuyt PM, et al. The PRISMA 2020 statement: An updated guideline for reporting systematic reviews. *PLoS medicine* 2021; 18:e1003583.
14. Lussseau ADDRFMAC, David. 1.13 Citing R | An Introduction to R.
15. Staadegaard L, Caini S, Wangchuk S, et al. Defining the seasonality of respiratory syncytial virus around the world: National and subnational surveillance data from 12 countries. *Influenza and other respiratory viruses* 2021; 15:732-41.
16. Egger M, Davey Smith G, Schneider M, Minder C. Bias in meta-analysis detected by a simple, graphical test. *BMJ: British Medical Journal* 1997; 315:629-34.
17. Viechtbauer W, Cheung MW. Outlier and influence diagnostics for meta-analysis. *Research synthesis methods* 2010; 1:112-25.
18. Suntarattiwong P, Mott JA, Mohanty S, et al. The feasibility and performance of participant-collected mid-turbinate nasal swabs for detection of influenza virus, respiratory syncytial virus, and human metapneumovirus infections among pregnant women. *The Journal of infectious diseases* 2021.
19. Azziz-Baumgartner E, Veguilla V, Calvo A, et al. Incidence of influenza and other respiratory viruses among pregnant women: A multi-country, multiyear cohort. *International journal of gynaecology and obstetrics: the official organ of the International Federation of*

- Gynaecology and Obstetrics 2022; 158:359-67.
20. Chaw L, Kamigaki T, Burmaa A, et al. Burden of Influenza and Respiratory Syncytial Virus Infection in Pregnant Women and Infants Under 6 Months in Mongolia: A Prospective Cohort Study. *PloS one* 2016; 11:e0148421.
  21. Chu HY, Katz J, Tielsch J, et al. Clinical Presentation and Birth Outcomes Associated with Respiratory Syncytial Virus Infection in Pregnancy. *PloS one* 2016; 11:e0152015.
  22. Hause AM, Avadhanula V, Maccato ML, et al. A Cross-sectional Surveillance Study of the Frequency and Etiology of Acute Respiratory Illness Among Pregnant Women. *The Journal of infectious diseases* 2018; 218:528-35.
  23. Hause AM, Panagiotakopoulos L, Weintraub ES, et al. Adverse Outcomes in Pregnant Women Hospitalized With Respiratory Syncytial Virus Infection: A Case Series. *Clinical infectious diseases: an official publication of the Infectious Diseases Society of America* 2021; 72:138-40.
  24. Madhi SA, Cutland CL, Downs S, et al. Burden of Respiratory Syncytial Virus Infection in South African Human Immunodeficiency Virus (HIV)-Infected and HIV-Uninfected Pregnant and Postpartum Women: A Longitudinal Cohort Study. *Clinical infectious diseases: an official publication of the Infectious Diseases Society of America* 2018; 66:1658-65.
  25. Nyawanda BO, Otieno NA, Otieno MO, et al. The Impact of Maternal Human Immunodeficiency Virus Infection on the Burden of Respiratory Syncytial Virus Among Pregnant Women and Their Infants, Western Kenya. *The Journal of infectious diseases* 2022; 225:2097-105.
  26. Regan AK, Klein NP, Langley G, et al. Respiratory Syncytial Virus Hospitalization During Pregnancy in 4 High-income Countries, 2010-2016. *Clinical infectious diseases: an official publication of the Infectious Diseases Society of America* 2018; 67:1915-8.
  27. Hause AM, Avadhanula V, Maccato ML, et al. A Cross-sectional Surveillance Study of the Frequency and Etiology of Acute Respiratory Illness Among Pregnant Women. *Journal of Infectious Diseases* 2018; 218:528-35.
  28. Nguyen-Van-Tam JS, O'Leary M, Martin ET, et al. Burden of respiratory syncytial virus infection in older and high-risk adults: a systematic review and meta-analysis of the evidence from developed countries. *European respiratory review: an official journal of the European Respiratory Society* 2022; 31.
  29. Shi T, Vennard S, Jasiewicz F, Brogden R, Nair H. Disease Burden Estimates of Respiratory Syncytial Virus related Acute Respiratory Infections in Adults With Comorbidity: A Systematic Review and Meta-Analysis. *The Journal of infectious diseases* 2022; 226:S17-s21.
  30. Alimi Y, Lim WS, Lansbury L, Leonardi-Bee J, Nguyen-Van-Tam JS. Systematic review of respiratory viral pathogens identified in adults with community-acquired pneumonia in Europe. *Journal of clinical virology: the official publication of the Pan American Society for Clinical Virology* 2017; 95:26-35.
  31. Tin Tin Htar M, Yerramalla MS, Moïsi JC, Swerdlow DL. The burden of respiratory syncytial virus in adults: a systematic review and meta-analysis. *Epidemiology and infection* 2020; 148:e48.
  32. Shi T, Denouel A, Tietjen AK, et al. Global Disease Burden Estimates of Respiratory Syncytial Virus-Associated Acute Respiratory Infection in Older Adults in 2015: A Systematic Review and Meta-Analysis. *The Journal of infectious diseases* 2020; 222:S577-s83.
  33. Savic M, Penders Y, Shi T, Branche A, Pirçon JY. Respiratory syncytial virus disease burden in adults aged 60 years and older in high-income countries: A systematic literature review and meta-analysis. *Influenza and other respiratory viruses* 2022.
  34. Li Y, Kulkarni D, Begier E, et al. Adjusting for Case Under-Ascertainment in Estimating RSV Hospitalisation Burden of Older Adults in High-Income Countries: a Systematic Review and Modelling Study. *Infectious diseases and therapy* 2023; 12:1137-49.
  35. Shi T, McAllister DA, O'Brien KL, et al. Global, regional, and national disease burden estimates of acute lower respiratory infections due to respiratory syncytial virus in young children in 2015: a systematic review and modelling study. *Lancet (London, England)* 2017; 390:946-58.

36. Hamilton MA, Liu Y, Calzavara A, et al. Predictors of all-cause mortality among patients hospitalized with influenza, respiratory syncytial virus, or SARS-CoV-2. medRxiv: the preprint server for health sciences 2022.
37. Walsh E, Lee N, Sander I, et al. RSV-associated hospitalization in adults in the USA: A retrospective chart review investigating burden, management strategies, and outcomes. Health science reports 2022; 5.
38. Yoon JG, Noh JY, Choi WS, et al. Clinical characteristics and disease burden of respiratory syncytial virus infection among hospitalized adults. Scientific reports 2020; 10.
39. Neelam V, Reeves EL, Woodworth KR, et al. Pregnancy and infant outcomes by trimester of SARS-CoV-2 infection in pregnancy-SET-NET, 22 jurisdictions, January 25, 2020-December 31, 2020. Birth defects research 2023; 115:145-59.
40. Regan AK, Arah OA, Fell DB, Sullivan SG. SARS-CoV-2 Infection During Pregnancy and Associated Perinatal Health Outcomes: A National US Cohort Study. The Journal of infectious diseases 2022; 225:759-67.
41. Allotey J, Chatterjee S, Kew T, et al. SARS-CoV-2 positivity in offspring and timing of mother-to-child transmission: living systematic review and meta-analysis. BMJ (Clinical research ed) 2022; 376:e067696.
42. Vousden N, Ramakrishnan R, Bunch K, et al. Severity of maternal infection and perinatal outcomes during periods of SARS-CoV-2 wildtype, alpha, and delta variant dominance in the UK: prospective cohort study. BMJ medicine 2022; 1:e000053.
43. Wang R, Yan W, Du M, Tao L, Liu J. The effect of influenza virus infection on pregnancy outcomes: A systematic review and meta-analysis of cohort studies. International journal of infectious diseases: IJID: official publication of the International Society for Infectious Diseases 2021; 105:567-78.
44. Fell DB, Savitz DA, Kramer MS, et al. Maternal influenza and birth outcomes: systematic review of comparative studies. BJOG: an international journal of obstetrics and gynaecology 2017; 124:48-59.
45. Blencowe H, Krusevec J, de Onis M, et al. National, regional, and worldwide estimates of low birthweight in 2015, with trends from 2000: a systematic analysis. The Lancet Global health 2019; 7:e849-e60.
46. Hug L, You D, Blencowe H, et al. Global, regional, and national estimates and trends in stillbirths from 2000 to 2019: a systematic assessment. Lancet (London, England) 2021; 398:772-85.
47. Lee AC, Kozuki N, Cousens S, et al. Estimates of burden and consequences of infants born small for gestational age in low and middle income countries with INTERGROWTH-21(st) standard: analysis of CHERG datasets. BMJ (Clinical research ed) 2017; 358:j3677.
48. Chawanpaiboon S, Vogel JP, Moller AB, et al. Global, regional, and national estimates of levels of preterm birth in 2014: a systematic review and modelling analysis. The Lancet Global health 2019; 7:e37-e46.
49. Broberg EK, Waris M, Johansen K, Snacken R, Penttinen P. Seasonality and geographical spread of respiratory syncytial virus epidemics in 15 European countries, 2010 to 2016. Euro surveillance: bulletin European sur les maladies transmissibles = European communicable disease bulletin 2018; 23.
50. Loubet P, Lenzi N, Valette M, et al. Clinical characteristics and outcome of respiratory syncytial virus infection among adults hospitalized with influenza-like illness in France. Clinical microbiology and infection: the official publication of the European Society of Clinical Microbiology and Infectious Diseases 2017; 23:253-9.
51. Rozenbaum MH, Begier E, Kurosky SK, et al. Incidence of Respiratory Syncytial Virus Infection in Older Adults: Limitations of Current Data. Infectious diseases and therapy 2023:1-18.
52. Zhang Y, Sakthivel SK, Bramley A, et al. Serology Enhances Molecular Diagnosis of Respiratory Virus Infections Other than Influenza in Children and Adults Hospitalized with Community-Acquired Pneumonia. Journal of clinical microbiology 2017; 55:79-89.
53. Onwuchekwa C, Moreo LM, Menon S, et al. Under-ascertainment of Respiratory Syncytial

Virus infection in adults due to diagnostic testing limitations: A systematic literature review and meta-analysis. *The Journal of infectious diseases* 2023.

54. Korsten K, Adriaenssens N, Coenen S, et al. World Health Organization Influenza-Like Illness Underestimates the Burden of Respiratory Syncytial Virus Infection in Community-Dwelling Older Adults. *The Journal of infectious diseases* 2022; 226:S71-s8.

## ANNEXES

### ANNEX I. Supplementary material

#### Table of contents

[Supplementary table 1: Search strategy 22](#)

[Supplementary table 2: Inclusion criteria of the study 24](#)

[Supplementary table 3: Items for risk of bias assessment 24](#)

[Supplementary table 4: Individual characteristics of included studies 27](#)

[Supplementary table 5: Risk of bias assessment for cohort studies 29](#)

[Supplementary table 6: Risk of bias assessment for cross-sectional studies 30](#)

[Supplementary table 7: Proportion positive for RSV in pregnant individuals with acute respiratory infections 31](#)

[Supplementary table 8: Leave-one-out sensitivity analysis of the proportion positive of RSV-associated acute respiratory infections in pregnant individuals 34](#)

[Supplementary table 9: Incidence rate of RSV in pregnant individuals 37](#)

[Supplementary table 10: RSV hospitalization rate in pregnant individuals 39](#)

[Supplementary table 11: Hospitalization in pregnant individuals with RSV acute respiratory infections 41](#)

[Supplementary table 12: RSV proportion positive in pregnant individuals hospitalized with acute respiratory infections 42](#)

[Supplementary table 13: RSV-related deaths in pregnant individuals with acute respiratory infections 45](#)

[Supplementary table 14: Perinatal outcomes among pregnant individuals with and without RSV 46](#)

[Supplementary figure 1: Study selection 26](#)

[Supplementary figure 2: Assessment of publication bias based on funnel plot 35](#)

[Supplementary figure 3: Proportion positive for RSV in pregnant individuals with acute respiratory infections by seasonality 35](#)

[Supplementary figure 4: Proportion positive for RSV in pregnant individuals with acute respiratory infections by case identification settings 36](#)

Supplementary table 1: Search strategy

| Database          |    | Search                                      | Items   |
|-------------------|----|---|---------|
| Medline<br>(Ovid) | 1  | exp Respiratory Syncytial Virus/            | 10205   |
|                   | 2  | exp Respiratory Syncytial Virus Infections/ | 8312    |
|                   | 3  | exp Respiratory Syncytial Virus, Human/     | 3584    |
|                   | 4  | RSV.mp.                                     | 12843   |
|                   | 5  | Orthopneumovirus.mp.                        | 32      |
|                   | 6  | Disease burden.mp.                          | 16777   |
|                   | 7  | exp Hospitalization/                        | 284341  |
|                   | 8  | exp Incidence/                              | 296477  |
|                   | 9  | exp Prevalence/                             | 336216  |
|                   | 10 | exp Morbidity/                              | 636808  |
|                   | 11 | exp Mortality/                              | 420440  |
|                   | 12 | exp Pregnant Women/                         | 13110   |
|                   | 13 | exp Pregnancy/                              | 983382  |
|                   | 14 | Expecting women.mp.                         | 12      |
|                   | 15 | Childbearing.mp.                            | 13879   |
|                   | 16 | Expecting mother.mp.                        | 28      |
|                   | 17 | 1 or 2 or 3 or 4 or 5                       | 17986   |
|                   | 18 | 6 or 7 or 8 or 9 or 10 or 11                | 1259502 |
|                   | 19 | 12 or 13 or 14 or 15 or 16                  | 989852  |
|                   | 20 | 17 and 18 and 19                            | 58      |
|                   | 21 | Limit 20 to (humans and yr="1996 -Current") | 57      |
| Embase<br>(Ovid)  | 1  | exp Human respiratory syncytial virus/      | 7567    |
|                   | 2  | RSV.mp.                                     | 19066   |
|                   | 3  | Orthopneumovirus.mp.                        | 48      |
|                   | 4  | Disease burden.mp.                          | 64848   |

|                      |    |  |         |
|----------------------|----|--|---------|
|                      | 5  | exp Hospitalization/                       | 483247  |
|                      | 6  | exp Incidence/                             | 625554  |
|                      | 7  | exp Prevalence/                            | 924950  |
|                      | 8  | exp Morbidity/                             | 414374  |
|                      | 9  | exp Mortality/                             | 1294792 |
|                      | 10 | exp Pregnant Woman/                        | 103285  |
|                      | 11 | exp Pregnancy/                             | 744203  |
|                      | 12 | Expecting women.mp.                        | 31      |
|                      | 13 | Childbearing.mp.                           | 19907   |
|                      | 14 | Expecting mother.mp.                       | 41      |
|                      | 15 | 1 or 2 or 3                                | 22700   |
|                      | 16 | 4 or 5 or 6 or 7 or 8 or 9                 | 3092121 |
|                      | 17 | 10 or 11 or 12 or 13 or 14                 | 800181  |
|                      | 18 | 15 and 16 and 17                           | 205     |
|                      | 19 | Limit 18 to (human and yr="1996 -Current") | 192     |
|                      |    |  |         |
| Global Health (Ovid) | 1  | Respiratory Syncytial Virus.mp.            | 8311    |
|                      | 2  | Respiratory Syncytial Virus Infections.mp. | 276     |
|                      | 3  | RSV.mp.                                    | 5886    |
|                      | 4  | Orthopneumovirus.mp.                       | 13      |
|                      | 5  | Disease burden.mp.                         | 8402    |
|                      | 6  | Hospitalization.mp.                        | 34485   |
|                      | 7  | Incidence.mp.                              | 295076  |
|                      | 8  | Prevalence.mp.                             | 400211  |
|                      | 9  | Morbidity.mp.                              | 90117   |
|                      | 10 | Mortality.mp.                              | 263512  |
|                      | 11 | Pregnant Women.mp.                         | 55754   |
|                      | 12 | Pregnancy.mp.                              | 143932  |
|                      | 13 | Expecting women.mp.                        | 10      |

|                      |    |   |        |
|----------------------|----|---|--------|
|                      | 14 | Childbearing.mp.  | 5142   |
|                      | 15 | Expecting mother.mp.  | 14     |
|                      | 16 | 1 or 2 or 3 or 4  | 9385   |
|                      | 17 | 5 or 6 or 7 or 8 or 9 or 10   | 812266 |
|                      | 18 | 11 or 12 or 13 or 14 or 15  | 151706 |
|                      | 19 | 16 and 17 and 18  | 128    |
|                      | 20 | Limit 19 to yr="1996 -Current"  | 126    |
|                      |    |   |        |
| Web of Science       | 1  | All fields = ((Respiratory Syncytial Virus OR Respiratory Syncytial Virus Infections OR RSV OR Orthopneumovirus) AND (disease burden OR Hospitalization OR Incidence OR Prevalence OR Morbidity OR Mortality)) AND (Pregnant Women OR Pregnancy OR Expecting women OR Childbearing OR Expecting mother) | 252    |
|                      | 2  | Limit 1 to yr="1996 -Current"   | 251    |
|                      |    |   |        |
| Global Index Medicus | 1  | (Respiratory Syncytial Virus OR RSV) AND (Pregnant Women OR Pregnancy)  | 4      |

Supplementary table 2: Inclusion criteria of the study

|                 | Inclusion criteria   |
|-----------------|--|
| Participants    | Pregnant individuals with ARI (for RSV proportion positive and adverse perinatal outcomes) and Pregnant individuals (for RSV incidence rate) |
| Settings        | Case identification in community, outpatient, and inpatient settings   |
| Condition       | Laboratory tested for RSV  |
| Type of studies | Observational studies  |

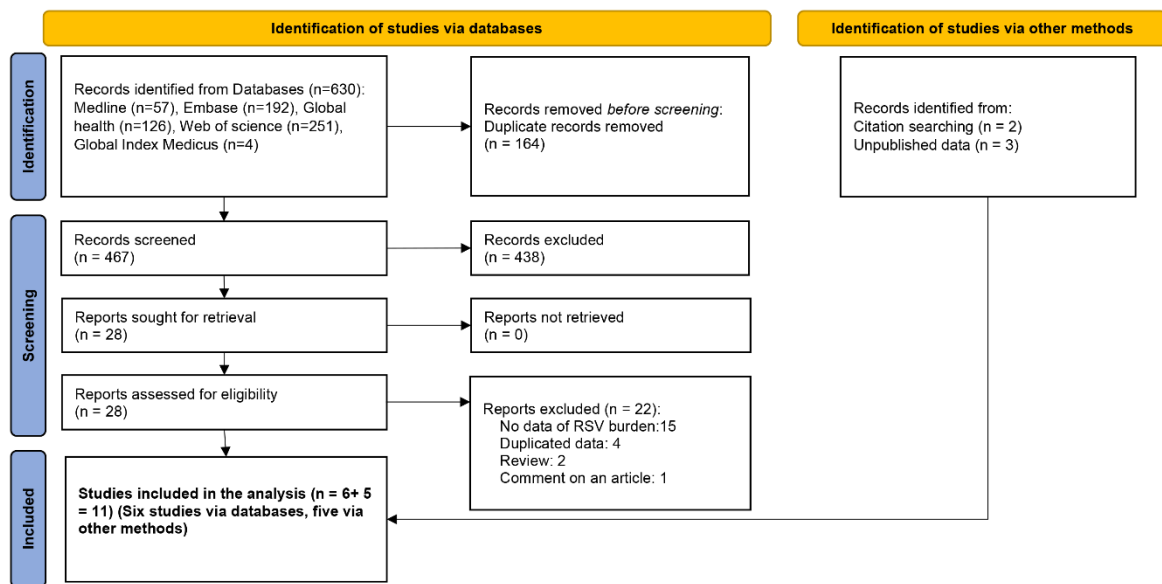
Supplementary table 3: Items for risk of bias assessment

|  | Yes<br>(1) | No<br>(0) | Unclear<br>(0) | Not applicable<br>(0) |
|--|------------|-----------|----------------|-----------------------|
|  |            |           |                |                       |

|   |  |  |  |  |
|---|--|--|--|--|
| JBI tool for cohort studies (We calculated the total percentage points for the cohort studies based on the score of 11 points (sum of study points x 100/11), with high percentages representing low bias).                 |  |  |  |  |
| 1. Were the two groups similar and recruited from the same population?  |  |  |  |  |
| 2. Were the exposures measured similarly to assign people to both exposed and unexposed groups?   |  |  |  |  |
| 3. Was the exposure measured in a valid and reliable way?   |  |  |  |  |
| 4. Were confounding factors identified?   |  |  |  |  |
| 5. Were strategies to deal with confounding factors stated?   |  |  |  |  |
| 6. Were the groups/participants free of the outcome at the start of the study (or at the moment of exposure)?   |  |  |  |  |
| 7. Were the outcomes measured in a valid and reliable way?  |  |  |  |  |
| 8. Was the follow-up time reported and sufficient to be long enough for outcomes to occur?  |  |  |  |  |
| 9. Was follow-up complete, and if not, were the reasons for loss to follow-up described and explored?   |  |  |  |  |
| 10. Were strategies to address incomplete follow-up utilized?   |  |  |  |  |
| 11. Was appropriate statistical analysis used?  |  |  |  |  |
|   |  |  |  |  |
| JBI tool for cross-sectional studies (We calculated the total percentage points for the cross-sectional studies based on the score of 8 points (sum of study points x 100/8), with high percentages representing low bias). |  |  |  |  |
|   |  |  |  |  |
| 1. Were the criteria for inclusion in the sample clearly defined?   |  |  |  |  |
| 2. Were the study subjects and the setting described in detail?   |  |  |  |  |
| 3. Was the exposure measured in a valid and reliable way?   |  |  |  |  |

|   |  |  |  |  |
|---|--|--|--|--|
| 4. Were objective, standard criteria used for measurement of the condition? |  |  |  |  |
| 5. Were confounding factors identified?                                     |  |  |  |  |
| 6. Were strategies to deal with confounding factors stated?                 |  |  |  |  |
| 7. Were the outcomes measured in a valid and reliable way?                  |  |  |  |  |
| 8. Was appropriate statistical analysis used?                               |  |  |  |  |

Supplementary figure 1: Study selection



Supplementary table 4: Individual characteristics of included studies

| Authors                        | Study design    | Countries                | Study period   | Gestational age at the episode of ARI | Case identification Settings       | Clinical definition                | RSV diagnostic method | Sample types         |
|--------------------------------|-----------------|--------------------------|--|---------------------------------------|------------------------------------|------------------------------------|-----------------------|----------------------|
| Azziz-Baumgartner et al., 2022 | Cohort          | El Salvador, Panama      | Oct/2014-Apr/2017; Year-round (2 years)                                | Unclear/not reported                  | Community                          | ARI (only febrile patients tested) | PCR                   | Unclear/not reported |
| Chaw et al., 2016              | Cohort          | Mongolia                 | Oct/2013-Apr/2014 and Oct/2014-Apr/2015; Seasonal (Oct-Apr, 2 seasons) | Unclear/not reported                  | Community/ Outpatients/ Inpatients | ILI/ SARI                          | RDT                   | Nasopharyngeal swabs |
| Hause et al., 2021             | Cross-sectional | United States of America | Aug/2010-Apr/2017; Year-round (6 years)                                | T2; T3                                | Outpatients/ Inpatients            | Unclear                            | Culture, PCR          | Unclear/not reported |
| Hause et al., 2018             | Cross-sectional | United States of America | Oct/2015-May/2016; Seasonal (Oct-May, 1 season)                        | T2; T3                                | Outpatients                        | ARI                                | PCR                   | Nasopharyngeal swabs |
| Madhi et al., 2018             | Cohort          | South Africa             | Mar/2011-Aug/2011, Mar/2012-Jul/2012; Seasonal (Mar-Aug, 2 seasons)    | Unclear/not reported                  | Community/ Outpatients/ Inpatients | ILI, HIV-uninfected, HIV-infected  | PCR                   | Nasopharyngeal swabs |

| Authors               | Study design | Countries   | Study period  | Gestational age at the episode of ARI | Case identification Settings       | Clinical definition               | RSV diagnostic method | Sample types                     |
|-----------------------|--------------|---|---|---------------------------------------|------------------------------------|-----------------------------------|-----------------------|----------------------------------|
| Nyawanda et al., 2022 | Cohort       | Kenya   | Feb/2015-Jan/2019; Year-round (4 years)                             | ≤20 wGA                               | Community/ Outpatients/ Inpatients | ARI, HIV-uninfected, HIV-infected | PCR                   | Nasal swabs, Oropharyngeal swabs |
| Regan et al., 2018    | Cohort       | Australia, Canada, Israel, United States of America | 2010-2016; Seasonal (Influenza season, 6 seasons)                   | Unclear/not reported                  | Inpatients                         | ARI                               | PCR                   | Unclear/not reported             |
| Dawood et al., Unpub  | Cohort       | Thailand  | May/2017-Dec/2017; May/2018-Dec/2018; Seasonal (May-Dec, 2 seasons) | T1; T2; T3                            | Community                          | ARI                               | PCR                   | Self nasal swabs                 |
| Chu et al., 2016      | Cohort       | Nepal   | Apr/2011-May/2014; Year-round (3 years)                             | T2; T3                                | Community                          | ARI                               | PCR                   | Nasal swabs                      |
| Frivold et al., Unpub | Cohort       | United States of America                            | 2011-2016; Seasonal (Influenza season, 5 seasons)                   | Unclear/not reported                  | Outpatients/ Inpatients            | ARI                               | PCR                   | Nasal swabs                      |

| Authors              | Study design    | Countries                | Study period   | Gestational age at the episode of ARI | Case identification Settings | Clinical definition | RSV diagnostic method  | Sample types         |
|----------------------|-----------------|--------------------------|--|---------------------------------------|------------------------------|---------------------|------------------------|----------------------|
| Havers et al., Unpub | Cross-sectional | United States of America | 2014-2018 and 2021-2022; Seasonal (Oct-Apr, 5 seasons) | Unclear/not reported                  | Inpatients                   | RSV-positive        | PCR, Antigen detection | Unclear/not reported |

ARI: Acute respiratory infections; HIV: human immunodeficiency virus; ILI: Influenza-like illness; PCR: polymerase chain reaction; RDT: rapid diagnostic tests; T1: First trimester; T2: Second trimester; T3: Third trimester; wGA: weeks' gestational age

Supplementary table 5: Risk of bias assessment for cohort studies

| Author  | Azziz-Baumgartner et al., 2022 | Chu et al., 2016 | Chaw et al., 2016 | Dawood et al., Unpub | Frivold et al., Unpub | Nyawanda et al., 2022 | Madhi et al., 2018 | Regan et al., 2018 |
|---|--------------------------------|------------------|-------------------|----------------------|-----------------------|-----------------------|--------------------|--------------------|
| 1. Were the two groups similar and recruited from the same population?                          | Yes                            | Yes              | Yes               | Yes                  | Yes                   | Yes                   | Yes                | Yes                |
| 2. Were the exposures measured similarly to assign people to both exposed and unexposed groups? | Yes                            | Yes              | Yes               | Yes                  | Yes                   | Yes                   | Yes                | Yes                |
| 3. Was the exposure measured in a valid and reliable way?                                       | Yes                            | Yes              | Yes               | Yes                  | Yes                   | Yes                   | Yes                | Yes                |
| 4. Were confounding factors identified?   | Yes                            | Yes              | Yes               | Yes                  | Yes                   | Yes                   | Yes                | Yes                |

|   |                |                |                |                |                |                |                |                |
|---|----------------|----------------|----------------|----------------|----------------|----------------|----------------|----------------|
| 5. Were strategies to deal with confounding factors stated?   | No             | No             | Yes            | No             | No             | No             | No             | No             |
| 6. Were the groups/participants free of the outcome at the start of the study (or at the moment of exposure)? | Yes            | Yes            | Yes            | Yes            | Yes            | Yes            | Yes            | Yes            |
| 7. Were the outcomes measured in a valid and reliable way?  | Yes            | Yes            | Yes            | Yes            | Yes            | Yes            | Yes            | Yes            |
| 8. Was the follow-up time reported and sufficient to be long enough for outcomes to occur?                    | Yes            | Yes            | Yes            | Yes            | Yes            | Yes            | Yes            | Yes            |
| 9. Was follow-up complete, and if not, were the reasons for loss to follow-up described and explored?         | Yes            | Yes            | Yes            | Yes            | Yes            | Yes            | Yes            | Yes            |
| 10. Were strategies to address incomplete follow-up utilized?   | Not applicable | Not applicable | Not applicable | Not applicable | Not applicable | Not applicable | Not applicable | Not applicable |
| 11. Was appropriate statistical analysis used?  | Yes            | Yes            | Yes            | Yes            | Yes            | Yes            | Yes            | Yes            |

Supplementary table 6: Risk of bias assessment for cross-sectional studies

| Author  | Hause et al., 2021 | Hause et al., 2018 | Havers et al., Unpub |
|---|--------------------|--------------------|----------------------|
| 1. Were the criteria for inclusion in the sample clearly defined? | Yes                | Yes                | Yes                  |
| 2. Were the study subjects and the setting described in detail?   | Yes                | Yes                | Yes                  |

|   |     |     |     |
|---|-----|-----|-----|
| 3. Was the exposure measured in a valid and reliable way?                   | Yes | Yes | Yes |
| 4. Were objective, standard criteria used for measurement of the condition? | Yes | Yes | Yes |
| 5. Were confounding factors identified?                                     | Yes | Yes | Yes |
| 6. Were strategies to deal with confounding factors stated?                 | No  | No  | No  |
| 7. Were the outcomes measured in a valid and reliable way?                  | Yes | Yes | Yes |
| 8. Was appropriate statistical analysis used?                               | No  | Yes | Yes |

Supplementary table 7: Proportion positive for RSV in pregnant individuals with acute respiratory infections

| Authors                        | Countries   | Study period                            | Gestational age      | Clinical definition | Number ARI patients tested | Number RSV positives | Proportion positive | Previously published related article |
|--------------------------------|-------------|---|----------------------|---------------------|----------------------------|----------------------|---------------------|--------------------------------------|
| Azziz-Baumgartner et al., 2022 | El Salvador | Oct/2014-Apr/2017                       | Unclear/not reported | ARI                 | 149                        | 11                   | 7.4                 |                                      |
| Azziz-Baumgartner et al., 2022 | Panama      | Oct/2014-Apr/2017                       | Unclear/not reported | ARI                 | 47                         | 3                    | 6.4                 |                                      |
| Chaw et al., 2016              | Mongolia    | Oct/2013-Apr/2014 and Oct/2014-Apr/2015 | T1; T2; T3           | ILI                 | 165                        | 4                    | 2.4                 |                                      |

| Authors               | Countries                | Study period      | Gestational age      | Clinical definition | Number ARI patients tested | Number RSV positives | Proportion positive | Previously published related article |
|-----------------------|--------------------------|-------------------|----------------------|---------------------|----------------------------|----------------------|---------------------|--------------------------------------|
| Hause et al., 2021    | United States of America | Aug/2010-Apr/2017 | T2; T3               | ARI                 | 1057                       | 25                   | 2.4                 |                                      |
| Hause et al., 2018    | United States of America | Oct/2015-May/2016 | T2; T3               | ARI                 | 81                         | 7 RSV-A and 1 RSV-B  | 8.6                 |                                      |
| Madhi et al., 2018    | South Africa             | Mar/2011-Aug/2011 | Unclear/not reported | ILI, HIV-uninfected | 1056                       | 14                   | 1.3                 |                                      |
| Madhi et al., 2018    | South Africa             | Mar/2012-Jul/2012 | Unclear/not reported | ILI, HIV-uninfected | 1060                       | 4                    | 0.4                 |                                      |
| Madhi et al., 2018    | South Africa             | Mar/2012-Jul/2012 | Unclear/not reported | ILI, HIV-infected   | 194                        | 3                    | 1.5                 |                                      |
| Nyawanda et al., 2022 | Kenya                    | Feb/2015-Jan/2019 | ≤20 wGA              | ARI, HIV-uninfected | 2360                       | 33                   | 1.4                 |                                      |
| Nyawanda et al., 2022 | Kenya                    | Feb/2015-Jan/2019 | ≤20 wGA              | ARI, HIV-infected   | 517                        | 19                   | 3.7                 |                                      |
| Dawood et al., Unpub  | Thailand                 | May/2017-Mar/2018 | T1 (<14 wGA)         | ARI                 | 21                         | 1                    | 4.8                 | 10.1093/infdis/jiab023               |
| Dawood et al., Unpub  | Thailand                 | May/2017-Mar/2018 | T2 (14-26 wGA)       | ARI                 | 110                        | 5                    | 4.5                 | 10.1093/infdis/jiab023               |
| Dawood et al., Unpub  | Thailand                 | May/2017-Mar/2018 | T3 (27-32 wGA)       | ARI                 | 84                         | 10                   | 11.9                | 10.1093/infdis/jiab023               |

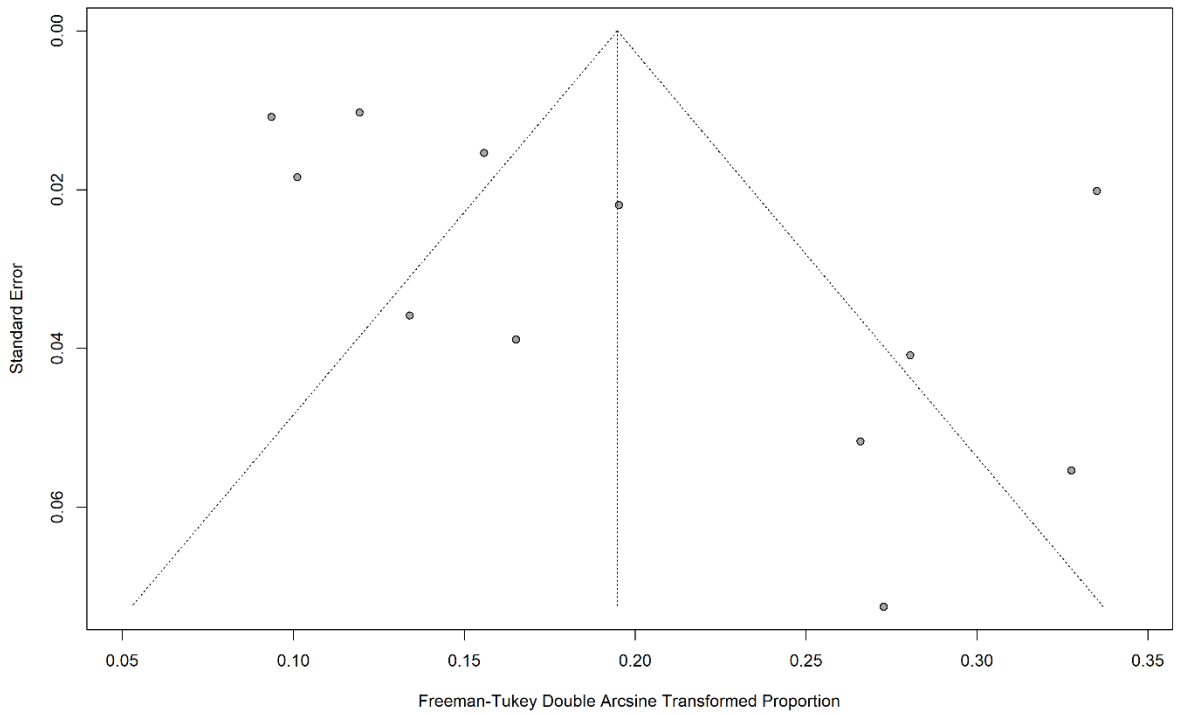
| Authors               | Countries                | Study period      | Gestational age      | Clinical definition | Number ARI patients tested | Number RSV positives | Proportion positive | Previously published related article |
|-----------------------|--------------------------|-------------------|----------------------|---------------------|----------------------------|----------------------|---------------------|--------------------------------------|
| Dawood et al., Unpub  | Thailand                 | May/2017-Mar/2018 | T3 (33-36 wGA)       | ARI                 | 64                         | 5                    | 7.8                 | 10.1093/infdis/jiab023               |
| Dawood et al., Unpub  | Thailand                 | May/2017-Mar/2018 | T3 (37-40 wGA)       | ARI                 | 22                         | 4                    | 18.2                | 10.1093/infdis/jiab023               |
| Dawood et al., Unpub  | Thailand                 | May/2018-Dec/2018 | T1 (<14 wGA)         | ARI                 | 25                         | 1                    | 4.0                 | 10.1093/infdis/jiab023               |
| Dawood et al., Unpub  | Thailand                 | May/2018-Dec/2018 | T2 (14-26 wGA)       | ARI                 | 127                        | 10                   | 7.9                 | 10.1093/infdis/jiab023               |
| Dawood et al., Unpub  | Thailand                 | May/2018-Dec/2018 | T3 (27-32 wGA)       | ARI                 | 84                         | 16                   | 19.0                | 10.1093/infdis/jiab023               |
| Dawood et al., Unpub  | Thailand                 | May/2018-Dec/2018 | T3 (33-36 wGA)       | ARI                 | 55                         | 10                   | 18.2                | 10.1093/infdis/jiab023               |
| Dawood et al., Unpub  | Thailand                 | May/2018-Dec/2018 | T3 (37-40 wGA)       | ARI                 | 22                         | 4                    | 18.2                | 10.1093/infdis/jiab023               |
| Chu et al., 2016      | Nepal                    | Apr/2011-May/2014 | T2; T3               | ARI                 | 733                        | 7                    | 1.0                 |                                      |
| Frivold et al., Unpub | United States of America | 2011-2016         | Unclear/not reported | ARI                 | 93                         | 6                    | 6.5                 |                                      |
|                       |                          |                   |                      |                     | Total= 8126                | Total= 203           |                     |                                      |

ARI: Acute respiratory infections; HIV: human immunodeficiency virus; ILI: Influenza-like illness; RSV: Respiratory syncytial virus; T1: First trimester; T2: Second trimester; T3: Third trimester; wGA: weeks' gestational age

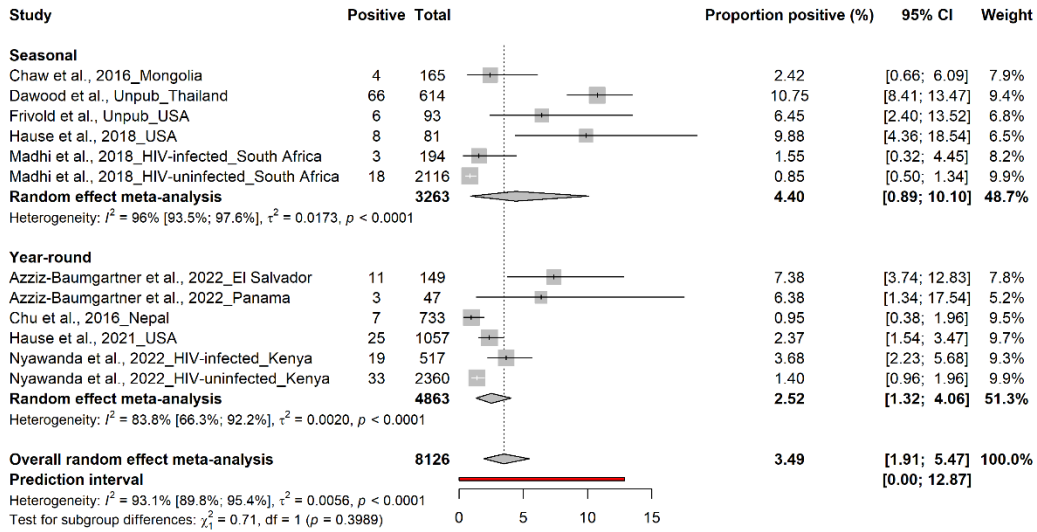
Supplementary table 8: Leave-one-out sensitivity analysis of the proportion positive of RSV-associated acute respiratory infections in pregnant individuals

| Authors   | RSV proportion positive [95% CI] |
|---|----------------------------------|
| Omitting Azziz-Baumgartner et al., 2022_EI Salvador     | 3.55 [1.56; 5.55]                |
| Omitting Azziz-Baumgartner et al., 2022_Panama          | 3.73 [1.72; 5.74]                |
| Omitting Chaw et al., 2016_Mongolia                     | 4.01 [1.87; 6.15]                |
| Omitting Chu et al., 2016_Nepal                         | 4.18 [2.08; 6.27]                |
| Omitting Frivold et al., Unpub_USA                      | 3.67 [1.64; 5.70]                |
| Omitting Dawood et al., Unpub_Thailand                  | 2.26 [1.31; 3.22]                |
| Omitting Hause et al., 2018_USA                         | 3.52 [1.59; 5.44]                |
| Omitting Hause et al., 2021_USA                         | 4.05 [1.88; 6.21]                |
| Omitting Madhi et al., 2018_HIV-infected_South Africa   | 4.10 [1.98; 6.23]                |
| Omitting Madhi et al., 2018_HIV-uninfected_South Africa | 4.19 [2.10; 6.27]                |
| Omitting Nyawanda et al., 2022_HIV-infected_Kenya       | 3.90 [1.73; 6.08]                |
| Omitting Nyawanda et al., 2022_HIV-uninfected_Kenya     | 4.14 [2.02; 6.27]                |

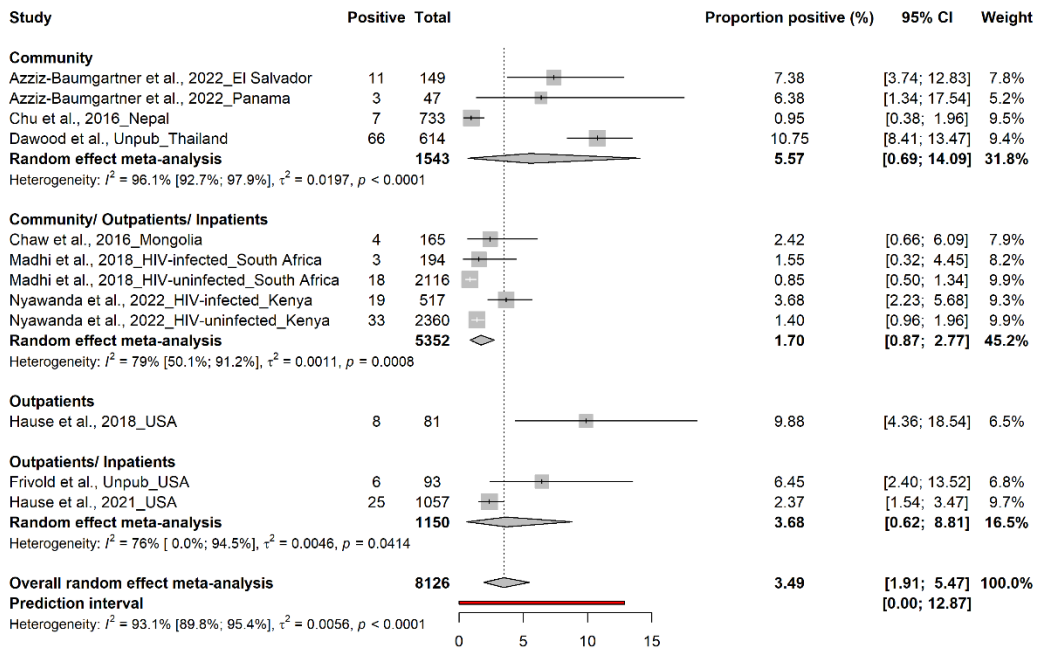
Supplementary figure 2: Assessment of publication bias based on funnel plot



Supplementary figure 3: Proportion positive for RSV in pregnant individuals with acute respiratory infections by seasonality



Supplementary figure 4: Proportion positive for RSV in pregnant individuals with acute respiratory infections by case identification settings



Supplementary table 9: Incidence rate of RSV in pregnant individuals

| Authors               | Countries    | Study period                            | Gestational age at the episode of ARI | Clinical definition | Number ARI patients tested | Number RSV positives | RSV incidence rate (95% CI) per 1000 person-months |
|-----------------------|--------------|---|---------------------------------------|---------------------|----------------------------|----------------------|--|
| Chaw et al., 2016     | Mongolia     | Oct/2013-Apr/2014 and Oct/2014-Apr/2015 | T1                                    | ILI                 | 35                         | 1                    | 24 (12-45)   |
| Chaw et al., 2016     | Mongolia     | Oct/2013-Apr/2014 and Oct/2014-Apr/2015 | T2                                    | ILI                 | 83                         | 1                    | 3 (3-9)  |
| Chaw et al., 2016     | Mongolia     | Oct/2013-Apr/2014 and Oct/2014-Apr/2015 | T3                                    | ILI                 | 56                         | 2                    | 9 (6-15)   |
| Madhi et al., 2018    | South Africa | Mar/2012-Jul/2012                       | Unclear/not reported                  | ILI, HIV-infected   | 194                        | 3                    | 6.5 (2.1-20.2)                                     |
| Madhi et al., 2018    | South Africa | Mar/2012-Jul/2012                       | Unclear/not reported                  | ILI, HIV-uninfected | 1056                       | 4                    | 1.5 (0.6-4)  |
| Madhi et al., 2018    | South Africa | Mar/2011-Aug/2011                       | Unclear/not reported                  | ILI, HIV-uninfected | 1060                       | 14                   | 5.3 (3.1-8.9)                                      |
| Nyawanda et al., 2022 | Kenya        | Feb/2015-Jan/2019                       | ≤20 wGA                               | ARI, HIV-infected   | 517                        | 19                   | 7.6 (4.4-11.3)                                     |
| Nyawanda et al., 2022 | Kenya        | Feb/2015-Jan/2019                       | ≤20 wGA                               | ARI, HIV-uninfected | 2360                       | 33                   | 2.9 (1.9-3.9)                                      |

Reproduction of this document or part of this document without PROMISE consortium permission is forbidden. Any use of any part must acknowledge the PROMISE consortium as "This project has received funding from the Innovative Medicines Initiative 2 Joint Undertaking under grant agreement 101034339. This Joint Undertaking receives support from the European Union's Horizon 2020 research and innovation programme and EFPIA". This document is shared within the PROMISE Consortium and is in line with the general communication guidelines described in the PROMISE Consortium Agreement.

| Authors              | Countries | Study period      | Gestational age at the episode of ARI | Clinical definition | Number ARI patients tested | Number RSV positives | RSV incidence rate (95% CI) per 1000 person-months |
|----------------------|-----------|-------------------|---------------------------------------|---------------------|----------------------------|----------------------|--|
| Dawood et al., Unpub | Thailand  | May/2017-Mar/2018 | T1 (<14 wGA)                          | ARI                 | 21                         | 1                    | 0.21 (0.01-1.04)                                   |
| Dawood et al., Unpub | Thailand  | May/2017-Mar/2018 | T2 (14-26 wGA)                        | ARI                 | 110                        | 5                    | 1.06 (0.39-2.34)                                   |
| Dawood et al., Unpub | Thailand  | May/2017-Mar/2018 | T3 (27-32 wGA)                        | ARI                 | 84                         | 10                   | 2.12 (1.08-3.77)                                   |
| Dawood et al., Unpub | Thailand  | May/2017-Mar/2018 | T3 (33-36 wGA)                        | ARI                 | 64                         | 5                    | 1.06 (0.39-2.34)                                   |
| Dawood et al., Unpub | Thailand  | May/2017-Mar/2018 | T3 (37-40 wGA)                        | ARI                 | 22                         | 4                    | 0.85 (0.27-2.04)                                   |
| Dawood et al., Unpub | Thailand  | May/2018-Dec/2018 | T1 (<14 wGA)                          | ARI                 | 25                         | 1                    | 0.20 (0.01-1.00)                                   |
| Dawood et al., Unpub | Thailand  | May/2018-Dec/2018 | T2 (14-26 wGA)                        | ARI                 | 127                        | 10                   | 2.03 (1.03-3.63)                                   |
| Dawood et al., Unpub | Thailand  | May/2018-Dec/2018 | T3 (27-32 wGA)                        | ARI                 | 84                         | 16                   | 3.25 (1.93-5.17)                                   |

| Authors              | Countries | Study period      | Gestational age at the episode of ARI | Clinical definition | Number ARI patients tested | Number RSV positives | RSV incidence rate (95% CI) per 1000 person-months |
|----------------------|-----------|-------------------|---------------------------------------|---------------------|----------------------------|----------------------|--|
| Dawood et al., Unpub | Thailand  | May/2018-Dec/2018 | T3 (33-36 wGA)                        | ARI                 | 55                         | 10                   | 2.03 (1.03-3.63)                                   |
| Dawood et al., Unpub | Thailand  | May/2018-Dec/2018 | T3 (37-40 wGA)                        | ARI                 | 22                         | 4                    | 0.81 (0.26-1.96)                                   |

ARI: Acute respiratory infections; HIV: human immunodeficiency virus; ILI: Influenza-like illness; RSV: Respiratory syncytial virus; T1: First trimester; T2: Second trimester; T3: Third trimester; wGA: weeks' gestational age

Supplementary table 10: RSV hospitalization rate in pregnant individuals

| Authors                 | Countries           | Study period      | Gestational age at the episode of ARI | Population denominator | Number ARI patients tested | Number RSV positives | Incidence rate            | Previously published related article |
|-------------------------|---------------------|-------------------|---------------------------------------|------------------------|----------------------------|----------------------|---------------------------|--------------------------------------|
| Azziz-Baumgartner, 2022 | El Salvador, Panama | Oct/2014-Apr/2017 | Unclear/not reported                  |                        |                            |                      | 3.0 per 1000 person-years |                                      |
| Dawood et al., Unpub    | Thailand            | May/2017-Mar/2018 | T1 (<14 wGA)                          | 39,473                 | 0                          | 0                    |                           | 10.1093/infdis/jiab023               |

| Authors              | Countries | Study period      | Gestational age at the episode of ARI | Population denominator | Number ARI patients tested | Number RSV positives | Incidence rate                       | Previously published related article |
|----------------------|-----------|-------------------|---------------------------------------|------------------------|----------------------------|----------------------|--------------------------------------|--------------------------------------|
| Dawood et al., Unpub | Thailand  | May/2017-Mar/2018 | T2 (14-26 wGA)                        | 39,473                 | 1                          | 0                    | 0                                    | 10.1093/infdis/jiab023               |
| Dawood et al., Unpub | Thailand  | May/2017-Mar/2018 | T3 (27-32 wGA)                        | 39,473                 | 2                          | 0                    | 0                                    | 10.1093/infdis/jiab023               |
| Dawood et al., Unpub | Thailand  | May/2017-Mar/2018 | T3 (33-36 wGA)                        | 39,473                 | 4                          | 0                    | 0                                    | 10.1093/infdis/jiab023               |
| Dawood et al., Unpub | Thailand  | May/2017-Mar/2018 | T3 (37-40 wGA)                        | 39,473                 | 0                          | 0                    |                                      | 10.1093/infdis/jiab023               |
| Dawood et al., Unpub | Thailand  | May/2018-Dec/2018 | T1 (<14 wGA)                          | 41,014                 | 1                          | 0                    | 0                                    | 10.1093/infdis/jiab023               |
| Dawood et al., Unpub | Thailand  | May/2018-Dec/2018 | T2 (14-26 wGA)                        | 41,014                 | 0                          | 0                    |                                      | 10.1093/infdis/jiab023               |
| Dawood et al., Unpub | Thailand  | May/2018-Dec/2018 | T3 (27-32 wGA)                        | 41,014                 | 2                          | 1                    | 2.4 [0.4-17.3] per 1000 person-years | 10.1093/infdis/jiab023               |
| Dawood et al., Unpub | Thailand  | May/2018-Dec/2018 | T3 (33-36 wGA)                        | 41,014                 | 1                          | 0                    | 0                                    | 10.1093/infdis/jiab023               |

| Authors              | Countries | Study period      | Gestational age at the episode of ARI | Population denominator | Number ARI patients tested | Number RSV positives | Incidence rate | Previously published related article |
|----------------------|-----------|-------------------|---------------------------------------|------------------------|----------------------------|----------------------|----------------|--------------------------------------|
| Dawood et al., Unpub | Thailand  | May/2018-Dec/2018 | T3 (37-40 wGA)                        | 41,014                 | 1                          | 0                    | 0              | 10.1093/infdis/jiab023               |

RSV: Respiratory syncytial virus; T1: First trimester; T2: Second trimester; T3: Third trimester; wGA: weeks' gestational age

Supplementary table 11: Hospitalization in pregnant individuals with RSV acute respiratory infections

| Authors            | Countries                | Study period      | Settings                 | Clinical definition | Number ARI patients tested | Number RSV positives | Mother hospitalized among RSV positives | RSV proportion positive | Previously published related article |
|--------------------|--------------------------|-------------------|--------------------------|---------------------|----------------------------|----------------------|---|-------------------------|--------------------------------------|
| Hause et al., 2018 | United States of America | Oct/2015-May/2016 | Outpatients / Inpatients | ARI                 | 81                         | 8                    | 1                                       | 12.5                    |                                      |
| Madhi et al., 2018 | South Africa             | Mar/2012-Jul/2012 | Outpatients / Inpatients | ILI, HIV-infected   | 194                        | 3                    | 0                                       | 0                       |                                      |
| Madhi et al., 2018 | South Africa             | Mar/2012-Jul/2012 | Outpatients / Inpatients | ILI, HIV-uninfected | 1060                       | 4                    | 0                                       | 0                       |                                      |

| Authors               | Countries                | Study period                  | Settings                 | Clinical definition | Number ARI patients tested | Number RSV positives | Mother hospitalized among RSV positives | RSV proportion positive | Previously published related article |
|-----------------------|--------------------------|-------------------------------|--------------------------|---------------------|----------------------------|----------------------|---|-------------------------|--------------------------------------|
| Madhi, 2018           | South Africa             | Mar/2011-Aug/2011             | Outpatients / Inpatients | ILI, HIV-uninfected | 1056                       | 14                   | 0                                       | 0                       |                                      |
| Nyawanda et al., 2022 | Kenya                    | Feb/2015-Jan/2019             | Outpatients / Inpatients | ARI, HIV-infected   | 517                        | 19                   | 0                                       | 0                       |                                      |
| Nyawanda et al., 2022 | Kenya                    | Feb/2015-Jan/2019             | Outpatients / Inpatients | ARI, HIV-uninfected | 2360                       | 33                   | 0                                       | 0                       |                                      |
| Chu et al., 2016      | Nepal                    | Apr/2011-May/2014             | Household                | ARI                 | 733                        | 7                    | 0                                       | 0                       |                                      |
| Frivold et al., Unpub | United States of America | 2011-2016 (during flu season) | Outpatients / Inpatients | ARI                 | 933                        | 6                    | 0                                       | 0                       |                                      |

ARI: Acute respiratory infections; HIV: human immunodeficiency virus; ILI: Influenza-like illness; RSV: Respiratory syncytial virus.

Supplementary table 12: RSV proportion positive in pregnant individuals hospitalized with acute respiratory infections

| Authors              | Countries | Study period                            | Gestational age at the episode of ARI | Clinical definition | Number ARI patients tested | Number RSV positives | Previously published related article |
|----------------------|-----------|---|---------------------------------------|---------------------|----------------------------|----------------------|--------------------------------------|
| Chaw et al., 2016    | Mongolia  | Oct/2013-Apr/2014 and Oct/2014-Apr/2015 | T1; T2; T3                            | SARI                | 2                          | 0                    |                                      |
| Dawood et al., Unpub | Thailand  | May/2017-Mar/2018                       | T1 (<14 wGA)                          | ARI hospitalized    | 0                          | 0                    | 10.1093/infdis/jiab023               |
| Dawood et al., Unpub | Thailand  | May/2017-Mar/2018                       | T2 (14-26 wGA)                        | ARI hospitalized    | 1                          | 0                    | 10.1093/infdis/jiab023               |
| Dawood et al., Unpub | Thailand  | May/2017-Mar/2018                       | T3 (27-32 wGA)                        | ARI hospitalized    | 2                          | 0                    | 10.1093/infdis/jiab023               |
| Dawood et al., Unpub | Thailand  | May/2017-Mar/2018                       | T3 (33-36 wGA)                        | ARI hospitalized    | 4                          | 0                    | 10.1093/infdis/jiab023               |
| Dawood et al., Unpub | Thailand  | May/2017-Mar/2018                       | T3 (37-40 wGA)                        | ARI hospitalized    | 0                          | 0                    | 10.1093/infdis/jiab023               |

| Authors              | Countries   | Study period      | Gestational age at the episode of ARI | Clinical definition         | Number ARI patients tested | Number RSV positives | Previously published related article |
|----------------------|---|-------------------|---------------------------------------|-----------------------------|----------------------------|----------------------|--------------------------------------|
| Dawood et al., Unpub | Thailand  | May/2018-Dec/2018 | T1 (<14 wGA)                          | ARI hospitalized            | 1                          | 0                    | 10.1093/infdis/jiab023               |
| Dawood et al., Unpub | Thailand  | May/2018-Dec/2018 | T2 (14-26 wGA)                        | ARI hospitalized            | 0                          | 0                    | 10.1093/infdis/jiab023               |
| Dawood et al., Unpub | Thailand  | May/2018-Dec/2018 | T3 (27-32 wGA)                        | ARI hospitalized            | 2                          | 1                    | 10.1093/infdis/jiab023               |
| Dawood et al., Unpub | Thailand  | May/2018-Dec/2018 | T3 (33-36 wGA)                        | ARI hospitalized            | 1                          | 0                    | 10.1093/infdis/jiab023               |
| Dawood et al., Unpub | Thailand  | May/2018-Dec/2018 | T3 (37-40 wGA)                        | ARI hospitalized            | 1                          | 0                    | 10.1093/infdis/jiab023               |
| Regan et al., 2018   | Australia, Canada, Israel, United States of America | 2010-2016         | T1; T2; T3                            | ARI hospitalized (ICD Code) | 846                        | 21                   |                                      |

RSV: Respiratory syncytial virus; T1: First trimester; T2: Second trimester; T3: Third trimester; wGA: weeks' gestational age

Supplementary table 13: RSV-related deaths in pregnant individuals with acute respiratory infections

| Authors               | Countries                | Study period   | Settings                                 | Clinical definition               | Number ARI patients tested | Number RSV positives | RSV-positive deaths | Previously published related article |
|-----------------------|--------------------------|--|--|-----------------------------------|----------------------------|----------------------|---------------------|--------------------------------------|
| Chaw et al., 2016     | Mongolia                 | May/2018-Dec/2018                                      | Community/<br>Outpatients/<br>Inpatients | ILI                               | 165                        | 4                    | 0                   |                                      |
| Chu et al., 2016      | Nepal                    | Apr/2011-May/2014                                      | Community                                | ARI                               | 733                        | 7                    | 0                   |                                      |
| Frivold et al., Unpub | United States of America | 2011-2016 (during flu season)                          | Outpatients/<br>Inpatients               | ARI                               | 933                        | 6                    | 0                   |                                      |
| Havers et al., Unpub  | United States of America | 2014-2018 and 2021-2022; Seasonal (Oct-Apr, 5 seasons) | Inpatients                               | ARI                               | NA                         | 134                  | 0                   |                                      |
| Nyawanda et al., 2022 | Kenya                    | Feb/2015-Jan/2019                                      | Community/<br>Outpatients/<br>Inpatients | ARI, HIV-infected, HIV-uninfected | 2877                       | 52                   | 0                   |                                      |

ARI: Acute respiratory infections; HIV: human immunodeficiency virus; ILI: Influenza-like illness; NA: Not applicable; RSV: Respiratory syncytial virus

Supplementary table 14: Perinatal outcomes among pregnant individuals with and without RSV

| Authors              | Countries | Study period      | Gestational age at the episode of ARI | Clinical definition | Outcomes                  | Previously published related article |
|----------------------|-----------|-------------------|---------------------------------------|---------------------|---------------------------|--------------------------------------|
| Chu et al., 2016     | Nepal     | Apr/2011-May/2014 | T2; T3                                | ARI                 | Low birth weight          |                                      |
| Chu et al., 2016     | Nepal     | Apr/2011-May/2014 | T2; T3                                | ARI                 | Miscarriage               |                                      |
| Chu et al., 2016     | Nepal     | Apr/2011-May/2014 | T2; T3                                | ARI                 | Preterm birth             |                                      |
| Chu et al., 2016     | Nepal     | Apr/2011-May/2014 | T2; T3                                | ARI                 | Small for gestational age |                                      |
| Chu et al., 2016     | Nepal     | Apr/2011-May/2014 | T2; T3                                | ARI                 | Stillbirth                |                                      |
| Dawood et al., Unpub | Thailand  | May/2017-Mar/2018 | T1; T2; T3                            | ARI                 | Low birth weight          | 10.1093/infdis/jiab023               |

| Authors              | Countries    | Study period                         | Gestational age at the episode of ARI | Clinical definition | Outcomes                  | Previously published related article |
|----------------------|--------------|--------------------------------------|---------------------------------------|---------------------|---------------------------|--------------------------------------|
| Dawood et al., Unpub | Thailand     | May/2017-Mar/2018                    | T1; T2; T3                            | ARI                 | Miscarriage               | 10.1093/infdis/jiab023               |
| Dawood et al., Unpub | Thailand     | May/2017-Mar/2018                    | T1; T2; T3                            | ARI                 | Preterm birth             | 10.1093/infdis/jiab023               |
| Dawood et al., Unpub | Thailand     | May/2017-Mar/2018                    | T1; T2; T3                            | ARI                 | Small for gestational age | 10.1093/infdis/jiab023               |
| Madhi et al., 2018   | South Africa | Mar/2011-Aug/2011, Mar/2012-Jul/2012 | Unclear/not reported                  | ILI, HIV-uninfected | Low birth weight          |                                      |
| Madhi et al., 2018   | South Africa | Mar/2011-Aug/2011, Mar/2012-Jul/2012 | Unclear/not reported                  | ILI, HIV-uninfected | Preterm birth             |                                      |
| Madhi et al., 2018   | South Africa | Mar/2011-Aug/2011, Mar/2012-Jul/2012 | Unclear/not reported                  | ILI, HIV-uninfected | Stillbirth                |                                      |

ARI: Acute respiratory infections; HIV: human immunodeficiency virus; ILI: Influenza-like illness; NA: Not available; RSV: Respiratory syncytial virus; T1: First trimester; T2: Second trimester; T3: Third trimester; wGA: weeks' gestational age; Low birth weight (<2500 g); Preterm birth

(<37 wGA); Small for gestational age (infants whose birth weight lies below the 10th percentile for that gestational age); Stillbirth (fetus death  $\geq 20$  wGA); Miscarriage (pregnancy loss <20 wGA).